



Volume 3, Number 20

Tennessee's Lesbian & Gay Newsweekly

May 18, 1990

## Gay man strangled

### Bassett, 36, found dead in West Nashville duplex

by JEFF ELLIS  
Editor

Ron Bassett, 36, was found strangled to death Tuesday night in the bedroom of his home at 3133-A Parthenon Avenue in Nashville, just weeks after his home was burglarized by two men.

Bassett is the fifth gay man to be found murdered in Metropolitan Nashville/Davidson County since August, 1988. No suspects have been arrested in any of the other four cases.

Although authorities refused to comment on the specifics of their investigation, sources indicated to *Dare* that Bassett's sexual orientation could have had something to do with the murder.

Bassett's body was found fully-clothed, lying across the bed, by West Patrol officers J.D. Harper, Glen Hicks and Don Johnson.

Formerly from Memphis, Bassett was described by a friend, who asked not to be identified, as "real low-key, an all around good guy."

"We had dinner together about three months ago," the woman said. "So far as I know he didn't do drugs and was a very moderate drinker. He only went out every now and then."

As a result of the burglary on April 24, Bassett had bought a .22-caliber handgun for protection, friends reported. He had also been attempting to establish a crime watch program in his neighborhood.

"But he didn't appear to be real upset about the break-in. He seemed to accept it as something that happens to people," his friend told *Dare*. "He appeared dumbfounded that it had happened and only mentioned it in passing."



Anita Bryant, who during the 1970s was the most vocal proponent of the anti-lesbian/gay forces in the United States, is staging a comeback of sorts in middle Tennessee. On Thursday, May 17, she appeared at a fund-raiser in Franklin and in July will be honorary queen at Lebanon High School's homecoming. — DARE FILE PHOTO

A witness told authorities he saw two white males, aged 20-30 and driving a rust-colored Chevrolet truck, breaking into Bassett's apartment on April 24. Nothing was taken from Bassett's apartment, although his friend told *Dare* that Bassett said police did find fingerprints from that burglary during their investigation.

Police said Wednesday that they were unsure whether anything had been taken from the house during Tuesday night's incident, but that they were looking for Bassett's missing car — a 1987 grey Chevrolet Nova, license plate number KDC 729.

Bassett had last been seen Monday around 5 p.m. and, sources said, failed to report for work Tuesday at one of South Central Bell's Nashville office. ♦

## CARES' Potter resigns

### Executive director to leave state's oldest AIDS service organization

by JEFF ELLIS  
Editor

Sandee Potter, executive director of Nashville Council for AIDS Research, Education and Services (CARES), Tuesday submitted her resignation to board of directors president Rick Murphy.

Nashville CARES is Tennessee's oldest community-based AIDS services organization.

"I believe that both the agency and I are at transition points," Potter said. "It is my hope that Nashville CARES will benefit from a change in leadership and continue to move in the direction that I have set...a community-based AIDS service organization serving both clients and the community in a caring and professional manner."

Potter said late Wednesday that she would probably leave CARES "between Memorial Day and the end of the month."

"As for my own transition, I believe that it is time that I move from my administrative role at CARES so that I can better prepare for the challenges of AIDS in the 1990s and pursue further professional growth," Potter wrote in her resignation letter.

Although Potter said other career opportunities are available to her, she is "not a liberty to share with you at this time what that will be."

Potter took over the duties of executive director at CARES in early 1988.

At press time, board president Murphy was out of town and unavailable for comment. ♦

## Memphis' oldest bar closes

from STAFF REPORTS

George's, Memphis' oldest lesbian and gay bar, recently closed its doors, ending almost 30 years of history in the Bluff City.

Tracing its beginnings to 1960 and the Twilight Lounge, the nightclub has had several different owners during the past decades.

After the business was acquired by George Wilson, patrons began to refer to it as "George's" despite the various names under which business was being conducted.

Most recently, new owner Frank Cooper opened GDI on the River on Front Street. Damage caused by a faulty sprinkler system was said to be the cause for the closing. ♦

## AIDS update: Bush agrees to relax travel ban

Activists meet with Sullivan, researchers study alpha interferon

by JACKI MOSS  
Staff Writer

President Bush has agreed to allow interested people from outside the United States a special ten day visa to attend certain scientific conferences including the upcoming Sixth International Conference on AIDS in June.

Although the agreement is a step forward, it falls short of giving the nod of approval from the White House for legislation that will eliminate laws barring people with HIV from entering the country.

A coalition of AIDS activists recently met with Health and Human Services Secretary Louis Sullivan to discuss national AIDS policy.

Among the issues covered in the meeting with Sullivan were the AIDS immigration policy, the government's role in AIDS health care delivery and financing, AIDS funding and early intervention for people with HIV infection.

Activists called the meeting "historic" but noted that there was nothing tangible that came from the meeting.

Preliminary studies using alpha interferon to alleviate HIV symptoms show interesting results.

A study of 100 HIV infected patients in Kenya showed that by administering alpha interferon, an FDA-approved drug, via mouth in wafer form, patients had marked improvement in immune function

and gradual weight gain.

The study reported that the patient's CD4 cells increased an average of 557 cells and that patients regained appetites, and symptoms began to disappear in the eighth week of treatment.

Alpha interferon is currently approved for treatment of Kaposi's sarcoma and hairy cell leukemia, but not for treatment of HIV infection. It has been studied extensively in the past using various forms of administration with few positive results.

Researchers suggest that the difference may lie in the possibility that cells in the mouth may readily absorb the compound and stimulate the immune system. ♦

## Inside Dare



♦ **Andrew Dice Clay**  
*The sexist, homophobic, racist comic stirs up some stuff.*  
*Loose Lips, page 15.*

### ♦ Answering the question.

*Should we see Q & A? Persistence of Vision, page 6.*

### ♦ Steamy summer reading

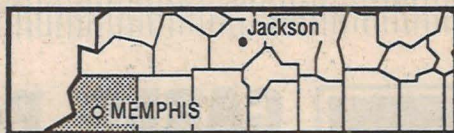
*'Take Me to the Underground' by Renée Hansen is reviewed in Pages, page 9.*



# Resources

## ✦ Friends, neighbors and networks

### Memphis



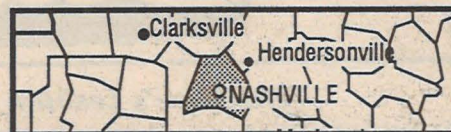
- **Agape New Life Church** Wednesdays: Bible study, 7pm. Sundays: Sunday School, 9:30am; Worship services, 11am & 7pm. Info (901) 276-1872.
- **Coffeehouse** Produced by Feminist Productions. Memphis Gay & Lesbian Community Center, 1291 Madison. 3rd Friday only, 8pm. \$2 donation. Info (901) 276-0844.
- **Gay Alternative Hour** Radio show, WEVL-FM 90. Mondays, 6-7pm.
- **GayRap** Memphis Gay & Lesbian Community Center, 1291 Madison. 3rd Monday, 7pm. Info (901) 324-GAYS.
- **Into the Light** (Women's Alcoholics Anonymous) Meeting. Memphis Lambda Center, 241 North Cleveland. Thursdays, 8pm; Sundays, noon. Info (901) 276-7379.
- **Lambda Men's Chorus** Memphis Gay & Lesbian Community Center, 1291 Madison. Tuesdays, 7:30pm. Info (901) 324-GAYS.
- **Memphis Gay & Lesbian Community Center** Board meeting, 1291 Madison. 3rd Saturday, 11:30am. Info (901) 324-GAYS or 454-1411.
- **Memphis Gay Coalition** Business meeting, Rm A, Memphis Public Library, Peabody & Maclean. 1st Monday. Info (901) 324-4297.
- **P-FLAG** (Parents and Friends of Lesbians and Gays) Support group. St. John's Episcopal Church, 322 S Greer. 1st Thursday only. Info (901) 761-1444.
- **Phoenix** (Gay Alcoholics Anonymous) Open meetings. Memphis Lambda Center, 241 North Cleveland. Mondays, 8pm; Tuesdays, 5:30 & 8pm; Wednesday, 8pm; Thursdays, 5:30pm; Fridays, 5:30 and 10pm; Saturdays, 8pm; Sundays, 8pm. Info (901) 272-9549.
- **Potluck dinner** Memphis Gay & Lesbian Community Center, 1291 Madison. 1st Saturday, 7pm. Info (901) 324-GAYS or 454-1411.
- **Seriously Sober** (Gay Alcoholics Anonymous) Meeting. Memphis Lambda Center, 241 North Cleveland. Fridays, 8pm. Info (901) 272-9549.
- **Twisted Sisters** (ACOA) Open meeting. Memphis Lambda Center, 241 North Cleveland. Saturdays, noon. Info (901) 276-7379.
- **Video Night** Memphis Gay & Lesbian Community Center, 1291 Madison. 1st & 3rd Thursdays, 8pm. Info (901) 324-GAYS or 454-1411.
- **Western Dance lessons** Memphis Gay & Lesbian Community Center, 1291 Madison. 2nd & 4th Thursdays, 7:30pm. Info (901) 324-GAYS or 454-1411.

### Murfreesboro



- **MTSU Lambda** Support group for lesbian and gay students, faculty, staff and alumni of Middle Tennessee State University. Fridays, 6pm. Info (615) 896-9541.

### Nashville



- **Affirmation** Meeting for lesbian and gay United Methodists. 4th Wednesday, 7pm. Info (615) 254-7628.
- **AI-Anon** Closed meeting. MCC, 131 15th Ave North. Tuesdays, 6:30pm.
- **Alcoholics Anonymous Program Study Group** Meeting, Belmont United Methodist, 2007 Acklen Ave. Fridays, 7:30pm.
- **Alternatives** (Alcoholics Anonymous) Closed meeting for lesbians & gay men. 131 15th Ave North. Thursdays, 8pm.
- **Being Meeting** Gay & Lesbian Co-Dependents Anonymous. Thursdays, 131 15th Ave North, 6:30pm; Saturdays, 168 2nd Ave North, 4pm. Info (615) 646-2238.
- **GALLIP** Gay & Lesbian Lives in Progress Switchboard. Operates 7-11pm. (615) 297-0008.
- **Gay / Lesbian Addictions Anonymous** Meeting, Belmont United Methodist Church, 2007 Acklen. Wednesdays, 8pm.
- **Incest Survivors Anonymous** First Church Unity, 5125 Franklin Rd. Thursdays: Closed women's meeting, 6:30pm. Saturdays: Open meeting, 5:30pm. Sundays: Closed men's & women's meeting, 6pm.
- **Lambda Group** Closed Alcoholics Anonymous meeting for gay men & lesbians, Unitarian Church, 1808 Woodmont Blvd. Mondays, 8pm.
- **Lesbian Adult Children of Alcoholics** (ACOA) Belmont United Methodist Church, 2007 Acklen Ave. Thursdays, 7:30pm.
- **MAGNET** (Married & Gay Network) Support group for married gay men. MCC, 131 15th Ave North. 1st & 3rd Mondays, 7:30pm. Info (615) 320-0288.
- **Metropolitan Community Church** 131 15th Ave North. Saturdays: community dinner, all you can eat, \$5. 7:30pm. Sundays: worship services, 11am & 7pm. Info (615) 320-0288.
- **Music City Sports Association** Softball league. At Whitfield Park, Edmondson Pike. Games Sundays at 1, 2 & 3pm. Info (615) 385-9689.
- **Nashville CARES** Tuesdays: HIV+ support group, 6pm; AIDS/ARC support group, 6:30pm. Wednesdays: newcomers support/education group, 6pm. Thursdays: visualization group, 7:15pm. Alternate Fridays: family & caregivers together sharing, 6pm. Info (615) 385-1510.
- **Nashville Women's Alliance** At Book Oasis. 3rd & 4th Tuesdays, 7:30pm. Info (615) 883-4833.
- **NLC** Channel 35. Tuesdays, 9pm. Saturdays, 8pm.
- **One in Teen** Support group for lesbian & gay teens. Wednesdays, 6:30pm. Info (615) 297-0008.
- **P-FLAG** Parents & Friends of Lesbians & Gays meeting, 4th Tuesday. Unitarian Church, 1808 Woodmont Blvd. 7:30pm. Info (615) 662-0332.
- **Pride '90** Lesbian & Gay Pride Week Committee meeting. Thursdays, 7pm. 1401 Cedar Ln. Info (615) 297-4571.
- **Sex Addicts Anonymous** At MCC, 131 15th Ave North. Wednesdays: closed meeting for gay men & lesbians, 5:30pm. Fridays: closed meeting, 5pm.
- **Vanderbilt AIDS Project** 1st & 3rd Tuesdays: women's support group, 6:30pm; caregivers' support group, 7pm. Thursdays: AIDS / ARC men's group, 7pm. 1st & 3rd Thursdays: family support group, 7pm. Info (615) 322-AIDS.
- **Women's Chorus** At Bethlehem Center, 1417 Charlotte. Sundays, 6-8pm. Info (615) 353-1336.

### Chattanooga



- **Chattanooga CARES** Closed support group. Mondays, 6:30pm. Info (615) 266-2422.
- **Gay/Lesbian AA** Open meeting. Unitarian Church, 3224 Navajo Dr. Thursdays, 8pm; No-smoke meeting Saturdays, 7pm.
- **Lesbian & Gay CoDA** Co-Dependents Anonymous. Reflections, Harrison. Sundays, 12:30pm. Info (615) 267-7824.
- **Metropolitan Community Church** Worship service, 3224 Navajo Dr. Sundays, 6:30pm.

### Clarksville



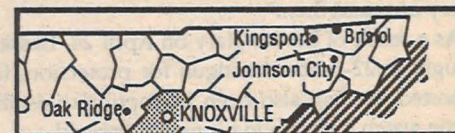
- **Clarksville CARES** Support group for HIV+, ARC, AIDS, family & partners. 1st & 3rd Mondays, 3pm. Info (615) 648-7730.

### Knoxville



- **aids Response Knoxville** Mondays: PWA support group, 7-8:30pm. Tuesdays: Circle of Love family & friends support group, 8pm. Wednesdays: HIV+ support group, 6:30pm. Info (615) 523-AIDS.
- **Gay and Lesbian Student Union/UTK** Weekly meeting. Tuesdays, 8pm. Info (615) 595-8686.
- **Gay Gratitude Group** Open, nonsmoking Alcoholics Anonymous. Mondays: Tennessee Valley Unitarian Church, 3219 Kingston Pike, 7pm. Fridays: MCC / Knoxville, 1320 North Central, noon.
- **Lesbian Codependents Anonymous** At aRK offices, 1320 North Central. Fridays, 8pm. Info (615) 933-8393.
- **Metropolitan Community Church** Worship service. Corner Weisgarber & Lonas. Sundays, 6pm. Info (615) 521-6546.
- **UT Gay Christian / Nonchristian Support Group** UT Humanities Bldg 53A. Wednesdays, 7:30pm. Info (615) 584-6934.

### Tri-Cities



- **Appalachian AIDS Coalition** Support group for PWAs, ARC, & HIV+ in southwest Virginia, including Bristol, TN. 3rd Thursday. Info (703) 985-0131.
- **Gay & Lesbian AA** Holston Valley Unitarian Church. Sundays, 4pm.
- **LE TSA** Lesbians of East Tennessee & Surrounding Areas social / support group. 1st & 3rd Tuesdays. Info Box 905 Mountain Home, TN 37684.
- **Metropolitan Community Church** Fridays: Women's Night, 7pm; Men's Night, 7pm. Sundays: worship service, 7pm. Holston Valley Unitarian Church. Info (615) 926-4393.
- **Tri-Cities AIDS Project** (TAP). Support group for care-givers / families of PWAs, HIV+ & ARC, 6:30pm. 2nd & 4th Tuesdays. Info (615) 928-6101 or 753-9647.

## ✦ Free publicity!

We'll list your nonprofit group or event free. Phone (615) 327-Dare or toll-free (800) 544-Dare, or write to *Dare*, Box 40422, Nashville, TN 37204-0422. Please include time, location, cost, sponsor, and a contact person's name with address and/or phone number for verification. Deadline is noon Monday for publication next Friday.



## BLACK & WHITE MEN TOGETHER / MEMPHIS

P.O. BOX 41773 MEMPHIS, TN 38174  
PHONE (901) 452-5894

## Harvey's Cleaning Service

Residential • Commercial

HARVEY LEE MORRIS  
Owner-Operator  
Nashville  
(615) 228-3060



## Carlton Cornett, ACSW, LCSW

Clinical Social Worker

- Individual psychotherapy • Family therapy •
  - Group psychotherapy • Relationship counseling •
  - Specializing in work with lesbian and gay couples •
  - Insurance Reimbursable • Hours by Appointment Only •
- (615) 269-7601

## Gail Du Bois

VICE PRESIDENT MARKETING

## Embassy Travel

210 25th Ave North, Nashville  
Phone (615) 320-5202  
TN toll free (800) 548-1031  
after hours (615) 297-5002



desktop for resumes, presentations,  
newsletters, business reports, etc.

## THE PAINTED WORD

nashville, tennessee  
(615) 731-3663

## We mean business.



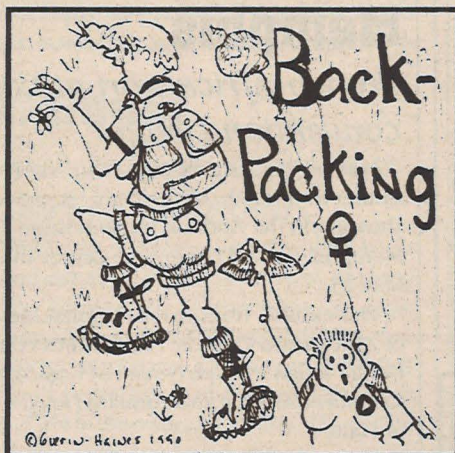
*Dare* is the perfect place to let  
lesbians and gay men know  
you welcome their business.  
More than 8100 readers every  
week can see your business  
card for as little as \$15 a week.  
It's a great way to show them  
you mean business.



Tennessee's Lesbian and Gay Newsweekly

## Hot dates

### + Big events



### Friday, May 18

**Celebration** Election victory celebration. Meet the  
candidates. Sponsored by Tennessee Gay & Lesbian  
Alliance (T-GALA). At Warehouse Two, 2529 Franklin  
Rd, Nashville. Free. 7:30-9:30pm. Info (615) 269-6778.

### Saturday, May 19

**Potluck picnic** A POSITIVE ATMOSPHERE. Promoting  
unity on health issues. 4pm. Info (901) 276-1778 or  
767-6026.

### Sunday, May 20

**Candlelight AIDS vigil** Sponsored by Nashville  
CARES, Vanderbilt AIDS Project, Metropolitan Com-  
munity Church / Nashville, and Tennessee Dept. Health  
& Environment AIDS Program. At Christ Episcopal  
Church, 9th & Broadway, Nashville. 2pm. Info (615)  
385-AIDS or 322-AIDS.

**Volleyball** Sponsored by Out and About / Memphis.  
At Forrest Park, across from Univ. of Tennessee, Mem-  
phis. Continues on 1st & 3rd Sundays. 2pm. Info (901)  
274-1847 or 276-0275.

**Candlelight AIDS memorial** Sponsored by Metro-  
politan Community Church / Tri-Cities and Tri-Cities  
AIDS Project. At Holston Valley Unitarian Universalist  
Church, Johnson City. 8:30pm. Info (615) 928-6101 or  
753-9647.

### Monday, May 21

**GayRap** GAY PRIDE AND HERITAGE: 21 YEARS OF THE GAY  
MOVEMENT. Video: THE TIMES OF HARVEY MILK. At Memphis  
Gay & Lesbian Community Center, 1291 Madison,  
Memphis.

**Consciousness raising** ME AND PHILLY. Black &  
White Men Together / Memphis. 7:30pm. Info (901)  
726-1461.

### Friday, May 25-Monday, May 28

**Anniversary celebration** 8TH ANNIVERSARY. Black &  
White Men Together / Memphis. Full schedule of week-  
end events in conjunction with Memphis in May cele-  
bration. Info (901) 726-1461.

### Saturday, May 26

**Fun Run** 2 miles. Sponsored by Out and About /  
Memphis. At Crump statue, Overton Park, Memphis.  
Continues on 2nd & 4th Saturdays. 8am. Info (901) 274-  
1847 or 276-0275.

### Monday, May 28 - MEMORIAL DAY Observed

## fine art photographs by jan lynch

for details contact:  
jan lynch  
Box 8196, Knoxville, TN 37996

1/3 of price donated to AIDS service organizations

526 East Iris Dr. (615) 352-4136  
Nashville, TN 37204

## H. Bendel Wilson, M.A.

Professional Counselor

- Individuals • Recovery Therapy
- Couples • Holotropic Breathwork

Joan Furman-Seaborg, M.S.N., R.N.



- Counseling • Relaxation Therapy
- Visualization for Your Health & Personal Growth Issues
- Individual & Group Therapy
- Personalized Audiotapes of Affirmations • Reiki

Nashville, TN • (615) 297-6995

## GUERRILLA GRAPHICS

just your type!

615 • 327 • 3273



## GIOVANNI'S ROOM

345 South 12th St • Phila., PA 19107

Gay Men's, Lesbian and Feminist  
Books, Magazines, Records, etc.

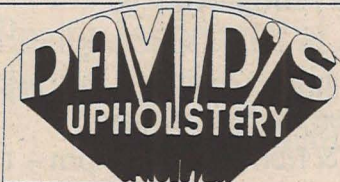
Call for our catalogs:  
1-800-222-6996

DAN BLY  
OWNER — STYLIST

HA

## HAIR AGAIN

a full hair replacement studio  
(615) 333-1778  
3715 North Natchez Ct • Nashville



217 Broadway, Nashville  
Days (615) 242-6008  
After 5:30 p.m. 228-9469

Please join us to protect  
privacy rights in Tennessee

\$20 individual, \$30 joint  
American Civil Liberties Union of Tennessee  
Box 120160, Nashville, TN 37212



## Dr. Nan Martin

Family Veterinary Medicine

SURGERY, MEDICINE, PREVENTIVE CARE  
FULL SERVICE HOSPITAL, HOUSE CALLS AND EMERGENCIES

(901) 385-VETS • 5124 Stage Rd  
in Stage Woods Office Park • Memphis, TN 38134



Lambda Counseling Associates  
of Nashville

Individual, Couple, HIV / AIDS Counseling and  
Support Groups

**Dan Ramey, LCSW, ACSW**

Licensed Clinical Social Worker  
BC / BS Preferred Provider Sliding Fee Scale  
(615) 292-9010

## Judy Eron, LCSW

Licensed Clinical Social Worker

Jim Siebold, PhD

Licensed Clinical Psychologist

Individual and Couples Counseling  
Nashville, 615 329-1656

## ABBY R. RUBENFELD

ATTORNEY AT LAW

WATT'S, UNDERWOOD & RUBENFELD  
SUITE 150 / 2000 RICHARD JONES ROAD  
NASHVILLE, TENNESSEE 37215  
615 269-6778

## RENAISSANCE

## TRASBIN STONER

...an agent you can  
be comfortable with.

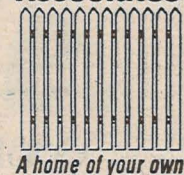
Nashville (615) 248-6161  
Member, Million Dollar Sales Club

A REAL ESTATE COMPANY

Wayne Brown  
Home (615) 331-5802  
Ilene Rose  
Home (615) 366-0331

## Realty Associates

Realty Associates  
(615) 385-9010  
Suite 100  
3200 West End Avenue  
Nashville, TN



A home of your own

## It's a Scream!

Come see our new books!

Alternative Gift Shop & Resource Center  
168 2nd Ave North, Nashville (615) 244-7346



## It's for you!

Nashville's new Gay and  
Lesbian Switchboard is now open.

- Information • Referrals
- Peer Counseling

EVERY DAY 7:00 p.m. - 11:00 p.m.  
(615) 297-0008



## Springtime is travel time.

Now is the time to start making your spring and summer travel plans. Call us for fast, courteous service. Nashville's gay travel business.

### Embassy Travel

210 25th Ave North, Nashville  
Phone (615) 320-5202  
TN toll free (800) 548-1031  
after hours (615) 297-5002



## Support the AIDS vaccine effort.



VOLUNTEERS NEEDED FOR AIDS VACCINE EVALUATIONS

Volunteers must be healthy adults between 18 & 60 years old.

For more information call (615) 343-AIDS



lowers for all occasions.  
Rosés only \$20 per boxed dozen.



*Michael's*  
**FLOWERS & GIFTS**

2181 Nolensville Road, Nashville • (615) 254-6886

## Juanita's

**B A R**

Cookout Sunday, May 20 • 5:00 p.m.

Zipper's MVP Tim Hardgrove

Sunday 25¢ draft 4 pm – 8 pm

Monday \$2.50 draft beer pitchers all day

Tuesday is Movie Night • 25¢ draft & free popcorn 8 pm – 11 pm

Beer Bust – \$3 All you can drink

Wednesday 7 pm – 11 pm Saturday 2 pm – 6 pm

**Nashville's Sunday Night Party Place!**



1700 4th Avenue South, Nashville 615/256-9681

compiled by **CURTIS BALLS**  
Staff Writer

## Memphis

### French-African art at Cook convention center

FRENCH REVOLUTION FROM THE TROPICS, a salute to French-African art, is currently showing in the Andrew Jackson room of the Memphis Cook Convention Center through May 25.

The exhibit, from Paris' National Museum of African and Oceanic Art, features contemporary artists Phillipe Nouail of France, Fode Camara of Senegal and Edouard Duval-Carrie of Haiti.

The exhibit, part of the 1990 Memphis in May International Festival, shows the influence of the revolutionary message of freedom on French-Africans from Africa, the Indian Ocean and the Caribbean. For information contact Alvin Major at (901) 942-7393. ♦

### 19th century American paintings at Brooks

The most important group of 19th century American paintings ever to be seen in the mid-South is now on exhibit at the Memphis Brooks Museum of Art in Overton Park.

PARIS 1889: AMERICAN ARTISTS AT THE UNIVERSAL EXHIBIT includes renowned American painters Thomas Eakins, John Singer Sargent and Daniel Ridgeway Knight.

Other memorabilia from the 1889 World's Fair in Paris is also on exhibit. The exhibit runs through July 15. Admission is \$4.

For information call (901) 722-3500. ♦

## Murfreesboro

### MTSU Lambda to sponsor Fantasy Night

MTSU's lesbian and gay student organization, Lambda Association, will sponsor Fantasy Night on Monday, May 21 at 7 p.m.

Spokesperson Daniel Webster explained that the event is a "way of breaking the ice and getting to know others" by asking them to write down their fantasy when guests arrive and tossing it into a hat. Fantasies can be romantic, erotic, social, or career, Webster said. Later in the evening, the fantasies will be drawn at random and read aloud. For details, call (615) 896-9541. ♦

## Nashville

### Leather lifestyle seminar to be held May 31

"Everything You Always Wanted to Know about Leather, S&M and Kinky People" is the title of a seminar to be presented by the Nashville chapter of the National Leather Association and the currently forming chapter of People Exchanging Power (PEP) of Clarksville on Thursday, May 31, in the Trophy Room of The Chute, 2535 Franklin Road, at 7 p.m.

The seminar will feature Nancy Ava Miller, a well known writer, lecturer and organizer in

the leather community.

The organization Miller helped to form, PEP, is open to all adults regardless of gender, sexual orientation or lifestyle.

According to seminar organizers, PEP's goal is to promote the right of all adults to engage in safe, sane and consensual sexual expression.

The two groups will also host a reception for Vance Reger, Mr. Leather Tennessee 1990. For details call (615) 262-3207. ♦

### 15th annual Edgefield tour set for this weekend

The 15th annual Historic Edgefield Tour of Homes will be held May 19 and 20 from 1 to 5 p.m. each day.

The walking tour of ten homes spans a few square blocks of the restored east Nashville neighborhood, highlighting some 101 years of local architecture: the earliest structure was built in 1885, the newest in 1986.

Among highlights of the tour will be "Artful Living," an exhibition of home furnishings curated by Sherri Hunter of the Watkins Institute, and the tea room set up on the grounds of Mayor Bill Boner's home at 714 Russell Street.

Live entertainment will be provided by Summer Lights on the Road.

Day-of-the-tour tickets are \$6 and may be purchased at a booth at 714 Russell. ♦

### Candlelight AIDS vigil to be held May 20

A candlelight vigil in remembrance of those people with AIDS and those who have died as a result of the disease will be held Sunday, May 20 at 2 p.m. at Christ Episcopal Church, 9th Avenue and Broadway, in downtown Nashville.

The vigil is sponsored by Nashville CARES, Vanderbilt AIDS Project, Metropolitan Community Church/Nashville and the Tennessee Department of Health and Environment's AIDS program. ♦

## Tri-Cities

### MCC/Tri-Cities celebrates 9th anniversary

Metropolitan Community Church of the Tri-Cities, located in Johnson City, will celebrate its ninth anniversary of ministry to the lesbian and gay community on Saturday, May 19 at 2 p.m.

Celebrants are asked to bring a covered dish, something for the grill and a friend. There will be games and volleyball during the afternoon. For more information and directions call (615) 349-7707. ♦

### Candlelight memorial service set for Sunday

A candlelight memorial service and an ecumenical religious service will be held Sunday, May 20, at 8:15 p.m. at Holston Valley Unitarian Church in Johnson City.

The service is co-sponsored by Metropolitan Community Church of the Tri-Cities and Tri-Cities AIDS Project. ♦



# Cross Country

compiled by **KAREN MATHIS**  
Editorial Assistant

## Chicago

### PAAC to telecast from international AIDS conference

Physicians Association for AIDS Care (PAAC) has released the programming schedule for their 25-hour telecast from the sixth International AIDS Conference, June 21-23.

In addition to over four hours of conference news, interviews and speeches each day, PAAC is launching its National AIDS Education Initiative which will include twelve hours of programming on current treatment options for the major AIDS-related diseases, as well as social, financial and ethical issues raised by the epidemic.

The telecast will be provided as a public service to any institution with satellite reception, cable stations and persons with home satellite dishes. All institutions registering for the telecast must agree to provide a demographic report on viewers.

For more information, write PAAC, 101 W. Grand Ave., Suite 200, Chicago, IL 60610. ♦

## New York City

### Lambda to open regional office in Los Angeles

Carol Buell and David Hollander, board co-chairs of Lambda Legal Defense and Education Fund, announced last week that the organization's board voted to open Lambda's first regional office on September 1, 1990.

The office will be located in Los Angeles and headed by Mary Newcombe, a Los Angeles attorney who has recently been hired as Lambda's fourth staff attorney.

"The opening of an office in California is an historic step for Lambda as it continues to respond to the increased visibility, activism and growing needs of gay men and lesbians. We very much hope in future years to build on this dream and open other regional offices in the midwest and south," said Buell. ♦

## San Francisco

### NGRA, insurance company reach settlement

A settlement for NATIONAL GAY RIGHTS ADVOCATES v. GREAT REPUBLIC INSURANCE COMPANY, a lawsuit filed in 1986, has finally been reached.

The lawsuit charged the insurance company with attempting to avoid underwriting of policies for those presumed to be at risk for AIDS by denying coverage to unmarried men who work in "occupations that do not require physical exertion...such as florists, interior decorators and fashion designers."

The lawsuit was one of the first cases to be filed under the San Francisco ordinance prohibiting discrimination on the basis of sexual orientation.

The settlement is the first legal action in the country to apply the Unruh Civil Rights Act which prohibits arbitrary discrimination by business enterprises to the insurance industry

and is the first action to be brought under the California Insurance Code prohibiting insurance companies from discrimination based on sex, marital status or sexual orientation. ♦

## St. Louis

### Cusick announces for state house bid in Missouri

Tim Cusick, a 12-year veteran of St. Louis gay and lesbian community activism, has filed for the Democratic nomination for state representative in the 64th district of Missouri.

Cusick's candidacy, which marks the first time an openly gay man has run for a state level office in the state and for any office in the St. Louis metropolitan area. ♦

## Washington, D.C.

### Mayoral candidate makes anti-gay/lesbian comments

At a meeting sponsored by the D.C. Gay and Lesbian Alliance, mayoral candidate John Ray made several anti-gay and lesbian remarks and advocated heterosexuality for the black community.

An at-large member of the D.C. Council and perceived respected member in the black community, Ray said heterosexuality "is the best way" for the black community.

"Faith in God" and the "traditional family as I grew up in" should be central values in the community.

"I have chosen a certain lifestyle which I believe in and that's the lifestyle that I advocate. And frankly, I'm not going to move one inch from that because that's what I believe," he said.

Ray also said he would not advocate for domestic partnership legislation now being proposed for D.C. residents. ♦

## West Hollywood

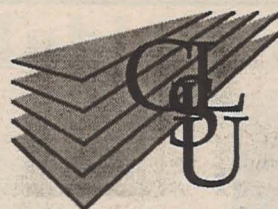
### 15 openly-gay/lesbian candidates running

As of early April, the Gay and Lesbian Association Political Action Committee (GALAPAC) counted over 15 openly gay candidates running for offices across the country this year.

Judith Abeles is running for a seat in the California state assembly, while other California races include Paul Wysocki for the San Jose Council; Carol Migden, Roberta Achtenberg and George Raya vying for seats on the San Francisco board of supervisors; Donna Hitchens and Kay Tsenin running for seats on the San Francisco supreme court; Ron Kurshaw contending for San Francisco county assessor and Steve Martin and John Heilman running for West Hollywood Council seats.

Mike Gelpi is making his second bid for the U.S. Congress in Ohio. The Maine state legislature attracted Dale McCormick and Sive Neilan.

Commenting on the burst of activity among gay candidates GALAPAC executive director Howard Armistead said, "That's why we formed GALAPAC." ♦



Join a group  
and  
be yourself!

the Gay and Lesbian Student Union at the  
University of Tennessee, Knoxville

CALL 615-595-8686  
for more information

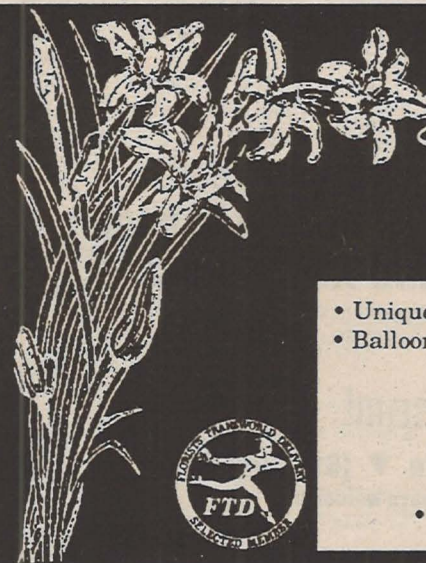
GLSU • PO Box 8529 • Knoxville, TN • 37996



It's time to be outside again.  
Come enjoy our covered deck.  
We're proud to serve Lite, Bud  
Light and Michelob Light.

"The Bar With"

2311 Franklin Road, Nashville  
615 269-5318 • Open 3 pm - 1 am



Rebel Hill  
FLORIST

- Unique designs by our award-winning designers
- Balloon bouquets • Fruit and gourmet baskets
- We deliver everywhere
- Credit cards honored by phone

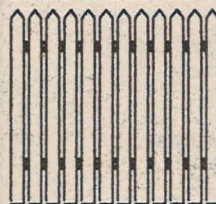
(615) 833-8555

• 4825 Trousdale (at Blackman), Nashville

**We've had  
a moving  
experience.**

We're proud to announce that we're now with  
Realty Associates at 3200 West End Avenue in  
Nashville. Call or come see us today for all your real  
estate needs.

**Realty  
Associates**



A home of your own

Wayne Brown Ilene Rose  
Home (615) 331-5802 Home (615) 366-0331

REALTY ASSOCIATES  
(615) 385-9010

3200 West End Avenue, Suite 100 Nashville, TN





**Just a reminder: We give you *real money*—not just a store credit—for your pre-read gay, lesbian and AIDS books.**

*It's a Scream!*

**168 2nd Avenue North, Nashville ▼ (615) 244-7346**  
Your Visa or Mastercard always welcome.

# Talk about AIDS.

But talk with people who know what they're saying.

Clarksville Council on AIDS  
Resources,  
Education and Services  
(Clarksville CARES)  
Box 336, Clarksville, TN 37041  
call Crisistine (901) 552-INFO

Chattanooga Council on AIDS  
Resources,  
Education and Services  
(Chattanooga CARES)  
Box 8402  
Chattanooga, TN 37411  
call (615) 266-2422

aids Response Knoxville (aRK)  
Box 3932  
Knoxville, TN 37927  
call (615) 523-AIDS

Aids to End AIDS Committee  
(ATEAC)  
Box 40389  
Memphis, TN 38174  
call (901) 458-AIDS  
24 hours call (901) 762-8401

Nashville Council on AIDS  
Resources,  
Education and Services  
(Nashville CARES)  
Box 25107  
Nashville, TN 37202  
call (615) 385-AIDS  
(615) 385-1510

Tri-Cities AIDS Project  
(TAP)  
Box 231  
Johnson City, TN 37605  
call (615) 928-6101  
or (615) 753-9647

a public service message from Dare

## Persistence of Vision

### ✦ Questioning Lumet's new film

*Q & A. Starring Nick Nolte, Timothy Hutton, Armand Assante. Screenplay by Sidney Lumet based on the book by Edwin Torres. Directed by Sidney Lumet.*

reviewed by **FLYNNE MALONE**  
Staff Writer

"Fags and spics up to their ass in shit...Who gives a shit?" is an example of the aggressive dialogue bent on damning minorities of almost all kinds in Sidney Lumet's *Q & A*.

In an example of the movies' muddle-headedness, these lines are spoken with too little irony by one of the "good guys."

The title refers to the official police records of interrogation sessions. "If it's not in the *Q & A*, it didn't happen."

Timothy Hutton (*DANIEL, FALCON AND THE SNOWMAN, FRIENDLY FIRE, ORDINARY PEOPLE, TURK 182, TAPS*, etc.) is a Queens, New York, Irish cop turned assistant D.A. for the Manhattan homicide bureau.

He has the right amount of toughness and naïvete for his performance as a neophyte who discerns the wrongdoing of cop Mike Brennan played by Nick Nolte (*UNDER FIRE, FAREWELL TO THE KING, DOWN & OUT IN BEVERLY HILLS, CANNERY ROW, THE DEEP*).

Nolte's sheer size, aggrandized by the high-heeled boots he sports, makes the prejudiced evil in his character all the more sinister.

He's held up as one of [New York's] "finest," but we see his ruthless dispatch of a drug dealer in the very beginning. He has become a vigilante with a badge, which makes his murders all the more cold-blooded.

There's not much revelation about his character. There doesn't have to be. In Lumet's world, everyone is a bigot, even sweet-faced "white bread" Hutton, who let his prejudice show only once, at exactly the wrong time.

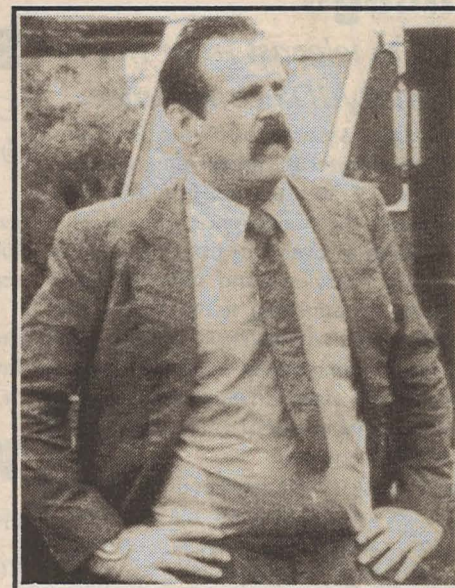
*Are tempered,  
spirit-ascending  
heroes and heroines  
too much to ask?  
We have always needed  
them and  
we always will.*

The most interesting character, because he is simultaneously the most enigmatic and explored is Bobby Texadore, played by the beguiling Armand Assante (*BELIZAIRE THE CAJUN, UNFAITHFULLY YOURS*), whose dark, aquiline good looks allow him to play more than one ethnic type from film to film. This is ironic casting

in this film that trades on the potentially dividing differences among people.

Though made without much real visual style, there are a few nice touches. The customer was stereotypically precise.

Hutton's new dark grey suit is ill-fitting,



especially worn with his white "cop socks."

Cop-on-the-take Nolte's clothes fit better, but can't stand the stress of the sweating corruption inside him.

Puerto Rican drug dealer Assante's character arrives for police interrogation in an expensive suit and tie, black loafers and no socks, long wavy hair simply swept back, the perfect portrait of renegade elegance.

The art direction shows again in one scene where a blue-trimmed patrol car is hauled from beneath a blue bridge as Nolte wears a blue shirt and looks into Hutton's blue eyes and says, "I wish you were dead."

Under this icy scene is a failed counterpoint score by Reuben Blades of busy violin with a big backbeat that resonates Dustin Hoffman bopping down the street as Tootsie.

There isn't much for the ear or eye in *Q & A*. Lumet (*SERPICO, PRINCE OF THE CITY, NETWORK, THE WIZ, DOG DAY AFTERNOON, THE GROUP, DEATHTRAP*, to name a few) is going, presumably, for the mind.

He has set many of his films in New York (and many of them have gay characters, most of which are rendered as victims). Here he's still in the same stew of corruption in the metropolis.

For more than two hours of *Q & A* (too much), he sloshes around in the muck of repetitious racial and gender-related assaults, a potentially significant theme of which he makes little ado about something.

The "fags" are seduced to be strangled. Puerto Ricans are "niggers with straight hair," and so on. But this violence is muddled overall by the interior deterioration of the "whole system." This, too, could be a valid theme worthy of inspiring resolution.

Lumet fails us, however, in the end. The crushed idealist Hutton does not integrate the necessity of impartial justice into the real world, but rather in fairy-tale sort, Lumet sends him off to sit on the beach of a remote, undeveloped island, to await the return of his true love's feelings.

Are tempered, spirit-ascending heroes and heroines too much to ask? We have always needed them and we always will. I'm tired of watching failure. Why not show a way to make justice work? ✦



# Onstage

## ✦ The all-new Southern belle

*STEEL MAGNOLIAS. By Robert Harling. Directed by Stephen Kent. Tennessee Repertory Theatre. At TPAC's Polk Theatre. Through May 26.*

reviewed by **JEFF ELLIS**  
Editor

In the few short years since it was first produced, *STEEL MAGNOLIAS* — Robert Harling's paean to Southern women and all of that which makes them unique and special — has become something of a contemporary classic.

In its quietly eloquent, richly textured and amusingly boisterous fashion, it tells the story of six women friends who meet each Saturday in the womanspace known as Truvy's Beauty Shop in Chinquapin Parish, Louisiana. It is a highly personal experience, one that touches all of us deeply.

What with the release of the film version late last year and numerous community theatre productions done throughout the region in the past months, it's entirely possible that *STEEL MAGNOLIAS* could suffer from overkill.

But thanks to Stephen Kent's evocative direction and the engaging performances of six very talented women, the Tennessee Repertory Theatre production of *STEEL MAGNOLIAS* (which opened last week at TPAC's Polk Theatre) is a rousing, if at times uneven, success.

Much to the credit of TRT, this production eschews clichéd performances, instead presenting the characters with an individualism that rings true. Perhaps the play's strongest point is its sharp delineation of characters — the six women are all very different while remaining reassuringly similar in spirit.

Playwright Harling is wise to let the audience get to know and love each of the characters before propelling them headlong into the tragedies of life. With that, we exult in their joys, revel in their happiness and share in their despair and pain.

Although the script is full of crackling one-

liners that are sure to elicit laughter, it requires the actresses cast in the various roles to be in command of the language.

Cast as Truvy, the beautician who claims "there is no such thing as natural beauty," Nan Gurley is immensely likable and thoroughly believable, although I'd have preferred a broader portrayal of the somewhat larger-than-life Truvy. Katie Prange, cast as Truvy's assistant Annelle, is charming, but seems to underplay the changes buffeting her character at every turn.

Frances Kemp is wonderfully appealing as Clairee Belcher, widow of the town's former mayor. Kemp seems to embody the picture of the modern Southern dowager — elegantly cool and refreshingly forthright, she's probably the show's true casting coup.

Delivering Harling's best lines is Janelle Cochrane as Ouiser Boudreaux, Chinquapin's richest woman. "I'm not crazy, I've just been in a bad mood for 40 years," is one of her choicest lines. Cochrane, her youthful demeanor belying her character's age, compensates for the age difference with a delightful performance.

Playing the most challenging roles in *STEEL MAGNOLIAS* are Mary Jane Harvill and Robie Jones and mother/daughter M'Lynn and Shelby Eatenton. Harvill's radiant performance is heartfelt and maternal (though she somehow lacks the power expected in the dramatic scenes of Act Two), eliciting our sympathies. Jones is spirited and headstrong as Shelby, presenting the appropriate blend of childish abandon and adult fortitude in her portrayal.

Kent's deft directorial touch is displayed most prominently in the interaction among the six women, direction that indicates a thoughtful understanding of his subject and a respect for the sanctity and secrets of the beauty shop.

Playing just as important supporting role as any of the actresses is Craig Spain's superb set, depicting Truvy's beauty shop as a mélange of styles that fairly reek of hairspray, nail polish and permanent wave solutions. ✦

## ✦ New musical to premiere

by **JEFF ELLIS**  
Editor

With a year of producing original works under their belts, the folks at Rave Revues are now readying the world premiere of their largest and "most spectacular" production to date, *WHISPERS, WIGS AND WENCHES*, a Broadway-style musical comedy based on Richard Sheridan's *THE RIVALS*.

*WHISPERS* is the latest effort from the writing team of Michael Bouson, Joe Correll and Kathy Shepard. Last year Rave Revues (Bouson, Correll and partner Katie Gladfelter) produced the team's *ALMOST A MIDSUMMER NIGHT'S DREAM*, which won critical acclaim and played to sold-out audiences.

Written in 1775, *THE RIVALS* (and *WHISPERS*) tells the raucous story of Jack Absolute, Lydia

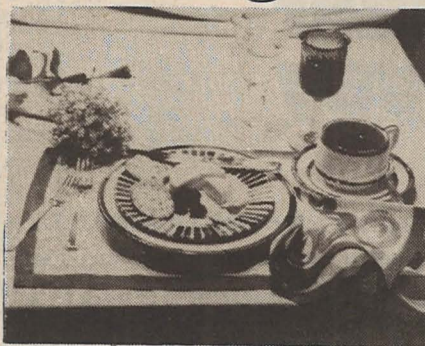
Languish and the ever-funny Mrs. Malaprop. It's a story filled with romantic intrigue and secrets. Wigs fly off, wenchies pop their bodices and the result is a tuneful updating of the theatre classic. In the cast are Bill Hood, Renée Wilson, Tom Bartlett, Martha Gabel, David Biddison, Brian Russell, Katie Gladfelter, Joe Correll and Michael Bouson.

*WHISPERS* is being pitched to New York and Los Angeles producers for possible future Broadway production. This may be the Nashville area's only chance to see the show before it hits the big time, Bouson says.

With only 12 performances scheduled, the show runs May 17-June 9, Thursday through Saturday nights at 8 p.m. at the Backstage at the Barn arena. Tickets for the show only are \$10. With full buffet dinner, tickets are \$22.

For details, call (615) 646-9977. ✦

## Table gear.



Deruta Italian handpainted pottery \$14 - 85.  
Ricci Italian silverplate \$140 / setting.  
Handpainted linens by Liz Wain \$17-30

Remember us for all your graduation gifts.

You know what you want.  
And our gift registry lets your friends know, too. It's simple, it's subtle — and it's goof-proof.

STREET



2416 Elliston Place  
Nashville

Across the street  
from Rotier's

Order by phone  
(615) 329-9337

SMART

## Lee's Touch of Class

Saturday, May 19  
9:30 & 11:30

## Cookout

Sunday, May 27  
Open at 1:00

The woman's choice

**RALPH'S**

515 2nd Ave S., Nashville (615) 256-9682

## GAYELLOW PAGES

Informing the Gay Community Since 1973

Accommodations, AA groups, bars, baths, bookstores, businesses, counselors, dentists, doctors, hotels, lawyers, mail order, media organizations, publications, religious groups, services, social groups, switchboards, therapists, travel agents, etc., etc., etc. (area codes and zip codes, too!)

SOUTHERN EDITION \$4.50 Alabama, Arkansas, N. & S. Carolina, Fla., Georgia, Kans., Kentucky, Louisiana, Mississippi, Missouri, New Mexico, Oklahoma, Puerto Rico, Tennessee, Texas, Virginia

USA & CANADA \$10

Renaissance House, Box 292 PL Village Stn, NY, NY 10014 (212) 674-0120. All books discreetly by first class mail; your name kept strictly confidential. To list a business or organization, or for further information, send stamped self-addressed business-size envelope. Please contact us for prices outside the USA.

Ask us about Gayellow Pages on mailing labels!

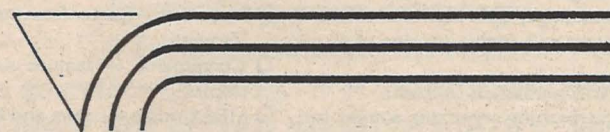
## COMMUNITY ELECTION

# VICTORY CELEBRATION



Meet the candidates!


Friday, May 18, 7:30 - 9:30 p.m.  
at Warehouse Two, 2529 Franklin Rd, Nashville  
No cover.



TENNESSEE GAY AND  
LESBIAN ALLIANCE

Sponsored by  
Tennessee Gay & Lesbian Alliance (T-GALA)  
To vote is voice. Silence is death.





# Dare Reader Survey

## Tell us more...

We're trying to make Dare even better. To do so, we need information from our readers about what we're doing right and what we can improve on. To that end, we'd really appreciate it if you'd take a few minutes to complete this survey. Please mail it to us by May 31, 1990. To ensure a valid sample, we ask that you fill in your name, address and phone number.

In return, we guarantee that your name will be kept completely confidential. And to show our appreciation for your help, we'll draw a name from responses for a \$50 prize.

If you'd like a copy of the results, please send your request along with a self-addressed stamped business-size envelope to: *Dare*, Tennessee's Lesbian and Gay Newsweekly, Box 40422, Nashville, Tennessee, 37204-0422. Results announced by June 15, 1990.

Name .....  
Address .....  
City ..... State ..... Zip .....  
Day phone ..... Evening phone .....

### CONTENT REVIEW

#### 1. In the last four months, which of the following Dare news stories did you find most interesting/provocative? (Check four)

- ☐ Bill clears senate hurdle
- ☐ ETSU students organize
- ☐ ATEAC auction raises \$25,000
- ☐ Lawmakers debate state handicap law
- ☐ Police identify victim; Overstreet found in Lake
- ☐ Vanderbilt CAB gives approval to policy
- ☐ Commission issues first report to Bush
- ☐ GALAPAC calls for more AIDS money
- ☐ Dreams of summer fun end in tragedy
- ☐ No funds available; future dicey for Lentz program
- ☐ Unsolved murders; 4 killed since '88
- ☐ T-GALA gives support; primary May 1
- ☐ President signs hate crimes bill
- ☐ Commentary: AIDSWALK 1990
- ☐ Mapplethorpe exhibit mired in controversy
- ☐ Tennesseans celebrate lesbian/gay pride week
- ☐ Nutrition guide published
- ☐ Bush ends AIDS silence
- ☐ Cops: 'still no suspects'
- ☐ AIDSWALK set for April 21
- ☐ NGLTF board in Tennessee
- ☐ Knoxville police arrest 8; cops go undercover
- ☐ Burglar attacks David Adams
- ☐ Trio still not linked to Sibert murder
- ☐ Memphis gay/lesbian parents organize
- ☐ Are poppers dangerous?
- ☐ Reports of lesbians/gay men executed in Iran
- ☐ \$6.5 million grant will enable vaccine trials to continue
- ☐ '90 Census to tally unmarried couples
- ☐ Reports of 'gay-bashing' episodes sought for study
- ☐ Baptists: 'practice what you preach'
- ☐ Federal hate crimes statistics act adopted
- ☐ Fourth annual ATEAC auction scheduled
- ☐ Scholarships offered to T-GALA members
- ☐ Crone in Tennessee to promote NLC
- ☐ Civil rights groups demonstrate
- ☐ Schlafly, Weddington debate abortion issue
- ☐ McDonald bans peep shows in Knoxville
- ☐ T-GALA elects Rubinfeld, Fisher co-chairs
- ☐ Warehouse 28 sold

- ☐ Legalization of same sex marriages
- ☐ Attorney General issues porn opinion

#### 2. In the past four months, which of the following Dare feature stories did you find most interesting/provocative?

- ☐ Unmasking the double standard: married and gay
- ☐ Take us out to the ball game
- ☐ Why are we co-dependent?
- ☐ Bisexuality: double your pleasure, double your fun?
- ☐ Living with AIDS: Jim Grooms and Ray Ankrom
- ☐ The Art of the Possible: Darlene Shadden
- ☐ The Art of the Possible: Jan Lynch
- ☐ Clothespin Fever Press
- ☐ Welcome to Camp Humor
- ☐ The Children's Hour — Lillian Hellman's play
- ☐ One in Teen — Support and solutions

#### 3. Below is a list of regular features that appear in Dare. Please rank in order of preference, with number one being your favorite, number 16 your least favorite.

- ☐ Marketplace — classified and personal ads
- ☐ Pages — book reviews and news
- ☐ Onstage — play reviews and theatre news
- ☐ Persistence of Vision — film reviews and movie news
- ☐ Soapbox — columns from various writers
- ☐ Gaybriefs — opinion column by Jim Roche
- ☐ Definitions — column by Nancy Lyn Define
- ☐ Loose Lips — quotes from the famous and not-so-famous
- ☐ Centerpiece — feature stories about various topics
- ☐ AIDS Update — news and information
- ☐ Big events — news of upcoming non-profit events
- ☐ Local Color — news of local happenings
- ☐ Cross Country — news from around the U.S.
- ☐ Our House — cartoons by Leslie Guerin-Haines
- ☐ Stonewall Riots — cartoons by Andrea Natalie
- ☐ In Focus — column by Carlton Cornett

#### 4. Below are a number of topics and issues covered with varying degrees of frequency by Dare. Please place an "X" next to topics

you find most interesting or provocative; circle topics you find least interesting or provocative.

- ☐ Art/photo exhibits
- ☐ Bar life
- ☐ Book reviews
- ☐ Female impersonation
- ☐ Humor
- ☐ Parenting
- ☐ Disability rights
- ☐ Anti-pornography forces
- ☐ Discrimination in the armed forces
- ☐ Lesbian health issues
- ☐ Gay men's health issues
- ☐ AIDS
- ☐ Religious organizations
- ☐ Abortion issues
- ☐ Lesbian/gay history
- ☐ Film reviews
- ☐ Theatre reviews
- ☐ Sodomy legislation
- ☐ Tennessee Gay and Lesbian Alliance
- ☐ National Gay and Lesbian Task Force
- ☐ Nashville Lambda Communications
- ☐ Interviews with authors
- ☐ Interviews with activists
- ☐ Investigative pieces
- ☐ Anti-lesbian/gay violence
- ☐ Bisexual issues
- ☐ Racial minorities
- ☐ Memphis Gay Alliance
- ☐ Chattanooga Gay and Lesbian Alliance
- ☐ Student lesbian/gay organizations
- ☐ Courtroom battles
- ☐ Police harassment
- ☐ Leather, S and M
- ☐ Political happenings in Tennessee
- ☐ Political happenings in the U.S.
- ☐ Chattanooga events
- ☐ Nashville events
- ☐ Knoxville events
- ☐ Memphis events
- ☐ Statewide events
- ☐ Tri-Cities events
- ☐ Crime investigations
- ☐ Coming out stories
- ☐ Recovery stories
- ☐ Teen lesbian/gay stories
- ☐ Feminist movement
- ☐ Regional news
- ☐ National news
- ☐ State news

#### 5. How informative or resourceful is Dare for members of the gay male community?

- ☐ Very informative/resourceful
- ☐ Informative/resourceful
- ☐ Somewhat informative/resourceful
- ☐ Not very informative/resourceful
- ☐ Not at all informative/resourceful

#### 6. How informative or resourceful is Dare for the lesbian community?

- ☐ Very informative/resourceful
- ☐ Informative/resourceful
- ☐ Somewhat informative/resourceful
- ☐ Not very informative/resourceful
- ☐ Not at all informative/resourceful

#### 7. How informative or resourceful is Dare about AIDS?

- ☐ Very informative/resourceful
- ☐ Informative/resourceful
- ☐ Somewhat informative/resourceful
- ☐ Not very informative/resourceful
- ☐ Not at all informative/resourceful

#### 8. Is reading Dare an important part of your week?

- ☐ Yes, very important
- ☐ Yes, important
- ☐ Somewhat important
- ☐ Not that important
- ☐ Not at all important

#### 9. Where do you get your information about the lesbian/gay community in Tennessee? (Check all that apply.)

- ☐ Dare
- ☐ GAZE
- ☐ THE ADVOCATE
- ☐ MCC/Knoxville newsletter

- ☐ MCC/Tri-Cities newsletter
- ☐ Nashville Lambda Communications
- ☐ T-GALA NEWSLETTER
- ☐ A NEWSLETTER, Nashville Women's Alliance
- ☐ LAVENDER NOTES, MCC-Nashville
- ☐ Mainstream daily paper
- ☐ Alternative newspaper (i.e. THE LOAFER, MEMPHIS FLYER, NASHVILLE SCENE)
- ☐ Television mainstream news
- ☐ Other lesbian/gay papers

### READER'S PERSONAL PROFILE

#### 10. In the last year, which of the following types of businesses or services have you supported? Circle all that apply, then indicate number of times during the last year.

- |                                                        |                                         |
|--------------------------------------------------------|-----------------------------------------|
| <input type="checkbox"/> Auto repair service           | <input type="checkbox"/> Restaurant     |
| <input type="checkbox"/> Bar/dance club                | <input type="checkbox"/> Movie theatre  |
| <input type="checkbox"/> Play theatre                  | <input type="checkbox"/> Ballet         |
| <input type="checkbox"/> Musical performance           | <input type="checkbox"/> Video store    |
| <input type="checkbox"/> Physical fitness club         | <input type="checkbox"/> Hair salon     |
| <input type="checkbox"/> Bookstore                     | <input type="checkbox"/> Phone sex line |
| <input type="checkbox"/> Clothing store                | <input type="checkbox"/> Gift shop      |
| <input type="checkbox"/> Vacation/travel business      | <input type="checkbox"/> Florist        |
| <input type="checkbox"/> Insurance/financial           | <input type="checkbox"/> Legal services |
| <input type="checkbox"/> Mail order business           | <input type="checkbox"/> Jewelry store  |
| <input type="checkbox"/> Health/mental health services |                                         |

#### 11. How many people besides you regularly read or look into your latest copies of Dare?

- ☐ none ☐ 1 ☐ 2 ☐ 3 ☐ more

#### 12. How long have you been reading Dare?

- ☐ Less than 1 month  
☐ 1-6 months  
☐ 6 months-1 year  
☐ More than 1 year  
☐ More than 2 years

#### 13. How likely would you be to use the products or services of Dare advertisers?

- ☐ Very likely  
☐ Likely  
☐ Somewhat likely  
☐ Not that likely  
☐ Not at all likely

#### 14. Which of the following have you done in the last year?

- ☐ Purchased any product or service advertised in Dare?  
☐ Mentioned to others businesses you saw advertised in Dare?  
☐ Placed or responded to a Dare display ad?  
☐ Placed or responded to a Dare classified ad?

#### 15. How politically active are you?

- ☐ Very politically active  
☐ Somewhat politically active  
☐ Not politically active at all

#### 18. How would you describe your sexual orientation?

- ☐ Lesbian ☐ Gay  
☐ Bisexual ☐ Heterosexual

#### 19. How old are you?

- ☐ under 18 ☐ 40-49  
☐ 18-21 ☐ 50-59  
☐ 21-24 ☐ 30-35  
☐ 25-29 ☐ 60-69  
☐ 36-39 ☐ over 70

#### 20. Annual income bracket (before taxes):

- ☐ Less than \$10,000 ☐ \$30,000-39,999  
☐ \$10,000-19,999 ☐ \$40,000-49,999  
☐ \$20,000-29,999 ☐ \$50,000+

#### 21. Education (indicate highest level):

- ☐ Junior high ☐ Some college  
☐ High school ☐ Graduated college  
☐ Trade/technical school ☐ Graduate school  
☐ Night/extension school

#### 22. What is your occupation?

#### 23. What is your zip code?



## Male prostitution ring uncovered

by JACKI MOSS  
Staff Writer

Men from Tennessee have been implicated in a nationwide male prostitute ring according to Indiana authorities.

Gay escort services that advertised in gay male magazines and worked through a computerized network are part of the ring that includes both male prostitutes and clients.

Investigators claim that the ring spanned some 39 states and was run by a Navy computer expert, James William Dayton, who died of a heart attack on March 16 in Fort Wayne, Indiana.

The computer code was broken for

investigators by a computer expert to allow them to find evidence of a nationwide prostitution ring.

Although there have been no arrests yet, the list of clients and prostitutes is said to be "voluminous" and authorities state that there are fifty prostitutes and over 300 clients.

About 140 pages of computer-generated job applications for gay escort services along with names, addresses, phone numbers and even some photos of men were found by authorities.

The escort services implicated in the investigation were Muscles USA and Muscles Midwest.

Ads for escorts promised more money for men who were body builders. ♦

## Pages

### ♦ Steamy summer fiction

TAKE ME TO THE UNDERGROUND. Renee Hansen. Freedom, California: The Crossing Press, 1990. 115 pages, \$7.95 paper.

reviewed by SHERRE DRYDEN  
Book Editor

Near the end of TAKE ME TO THE UNDERGROUND, Alexandra, the narrator, says, "It is night. Warm. The windows are open. The cat is on the rug. I've rented two videos. I make popcorn and a pitcher of lemonade. I want it to be regular. Please, let us be regular."

But by this time the reader is sure, and Alexandra is beginning to acknowledge, that her relationship with Dorey cannot be "regular."

TAKE ME TO THE UNDERGROUND is Alexandra's report of her union with Dorey, a union that will disturb some by its raw eroticism and others by its violence.

Alexandra's desire for Dorey is consuming ("I think that someday if I think of you hard enough I might be able to become you or become your child, your mother. I want to be. I want to be...full of you.")

Dorey's reaction is crazed, self-destructive. She slams her head through a glass wall, picks up a burning log with her bare hands.

Eventually, to survive, Alexandra tears herself away from Dorey. Pure passion is not enough. To be whole one must separate from the animal, the devouring worm inside her that Alexandra compares Dorey to; one must be "regular."

If this begins to sound like the usual, in lesbian fiction, valuing of spiritual over erotic love, it is not. TAKE ME TO THE UNDERGROUND is rescued from political correctness by Renée Hansen's definition of "regular" — the maintenance of a self, analysis, intellect — and by her recognition that sexuality should not be denied.

Alexandra never regrets her liaison with Dorey. A friend discovers a bite mark on Alexandra's arm: "Dorey did it," I respond. "I don't know, we were making love and she just bit me. Crazy, isn't it?" Mar-Beth smiles slyly. I smile. For a split second we know. We know and we will know it a thousand years back and a thousand years coming. We are



animals."

TAKE ME TO THE UNDERGROUND is unusual, too, for lesbian fiction, in that Alexandra's narration is not chronological.

There is no conventional plot, no crisis, no denouement. Hansen's use of the present tense collapses time and adds an urgency to the novel that reinforces its eroticism.

Logically, we know that Alexandra is telling of events which took place over several years. Alexandra says, often, that she is remembering, but tells her memories as though they are now.

The past becomes present, immediate. We become disoriented and caught in the same heat that catches Dorey and Alexandra.

Hansen's images of sex are intoxicated. Dorey, her hair dripping wet, makes love to Alexandra on the hall floor.

Dorey, upset that Alexandra is unable to eat, puts a piece of bread in her hands. As Alexandra eats, Dorey unbuttons her blouse, touches her breast and begins making love.

Both women watch, transfixed, as Alexandra scratches Dorey's arm until it bleeds. Sexual desire is carnal, not spiritual; neither sweet nor necessarily gentle. It is dangerous, consuming, but it is part of us.

Alexandra's rebirth comes when she refuses to merge her self with Dorey's, yet does not deny that she is a sexual being.

Renee Hansen's writing is exciting and intelligent.

I look forward to more. ♦

2-for-1  
Happy  
Hour  
Daily 4-8



Dine ▼ Dance  
at 1713 Church Street, Nashville

Masquerade Productions &  
Calamar Enterprises present

## Miss Tennessee Continental 1990

over \$500 in cash & prizes  
June 3, 1990 • 10:00 p.m.  
at the Warehouse Two  
2529 Franklin Road  
Nashville, Tennessee

For more information, call  
Miss Tennessee Continental Pageant  
at (615) 731-6016

SUSSEX TRUGS • ENGLISH GARDENING TOOLS • THE ULTIMATE HAT® • FELCO SHEARS • SOLERI BELLS

## Bedded out lately?

Beginning in Victorian times, it became fashionable to plant colorful tropical plants every spring. But those were the days when everyone had three gardeners. We specialize in perennials. They come back every year. They get bigger every year. Your maintenance diminishes every year.

At Botanica, we can turn your one-year stands into lifetime commitments.

- André Viette perennials
- Gilbertie herbs
- Imported tools and accessories
- Garden design and consultation

# BOTANICA

6006 Charlotte Pike, Nashville, TN 37209

615 • 356 • 6008

SOLERI BELLS • BEE SKEP • GARDENING BOOKS • TRELLIAGE / TOPIARY FRAMES • GOATSKIN GLOVES

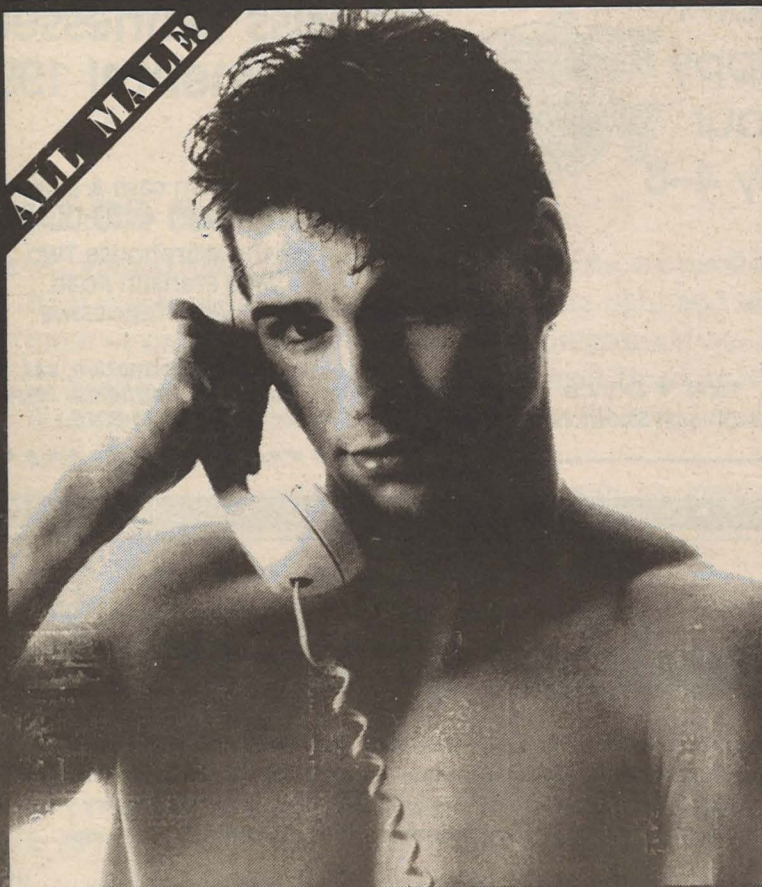
## AIDS Health Insurance Dignity

- ♦ Cannot be rated up or cancelled on an individual basis.
- ♦ We will lower your existing rates while increasing your coverage.
- ♦ Discounted group rates.
- ♦ A+ excellent rating. ♦ A non-profit company
- ♦ If you have not tested positive for HIV, you qualify.
- ♦ Bonus benefits you can use every day.
- ♦ AZT now 100% fully covered

Call Gordon Murdock at (615) 298-5781



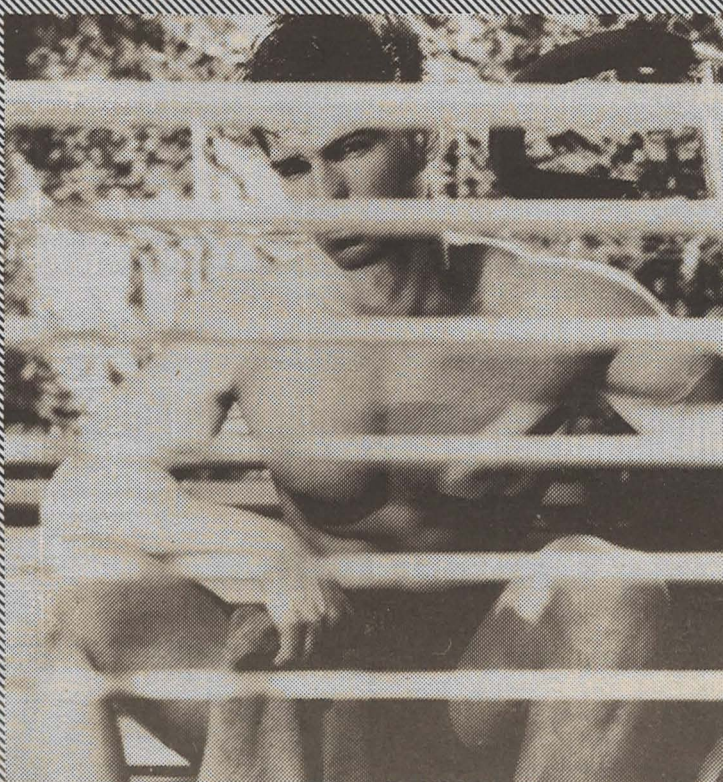
**DIAL NOW GUYS ARE WAITING!**



**1-900-999-3131**

95c PER MIN • \$2.00 THE 1st MIN • YOU MUST BE 18 OR OLDER • ©1990 REAL PEOPLE, LTD.

**I WANT YOU!**



**1-900-LOVE-MEN**

©1990 REAL PEOPLE, LTD. • 95c PER MIN. • \$2.00 THE 1st MIN. • YOU MUST BE 18 OR OLDER

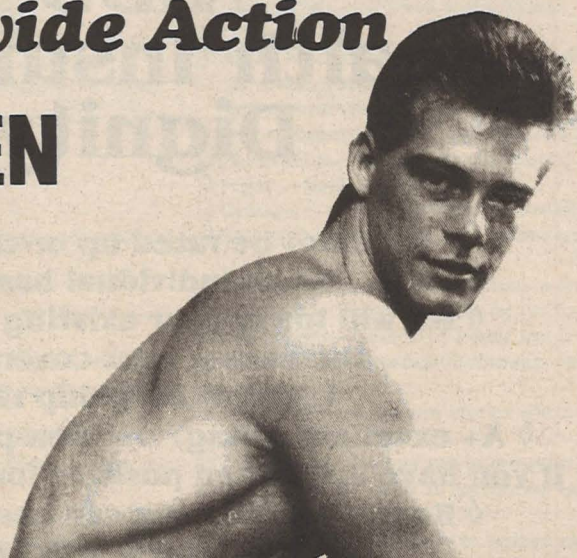
**LIVE!**

**Nationwide Action**

**FOR MEN ONLY**

**NO  
CREDIT CARD  
REQUIRED**

ADULTS ONLY  
95c PER MINUTE



**1-900-999-1114**

**Select Your Next Mate**

*Your Call Brings You  
All This Action!*

1. **MANN HUNT** - Hot one-on-one Action
2. **TALKE LIVE** - with up to 8 hot men
3. **REMATCH** - For the men of your choice
4. **RECORD** - your private voice Mail Box
5. **RETRIEVE** - Messages other callers have left in your Mail Box
6. **HEAR** - Messages other callers have left on our Message Center

**MATCH**



**MATE**

*For that meaningful Relationship*

**Voice Mail Box 1-900-820-8017**

0.75 cts. per min. 1.50 first min.

**Live Action 1-900-999-MANN**

Call Free **(213) 617-0753**

**6 2 6 6**  
0.95 per min.

TOLL CHARGES MAY BE APPLICABLE. GUARANTEED CONNECTION WHEN BUSY.

CALLERS MUST BE 18 YRS. OR OLDER.



# Marketplace

## + Announcements

• **Wanted:** lesbians from all parts of Tennessee interested in helping with local and statewide organizing for the National Lesbian Conference. Box 22851, Nashville 37202-2851 or call (615) 444-5772 or 383-6117.

• **WANTED:** Part-time development director, Tennesseans Keeping Abortion Legal & Safe (TKALS). Direct mail, direct solicitation, workw/volunteers, make budget proposals. Must have org. skills, gd comm. skill. Self-conf & enthus. Write TKALS Job Opening, Box 120871, Nashville 37212.

• Gay & lesbian switchboard of Nashville needs volunteers. Call GALLIP, (615) 297-0008 for training information.

• Tailoring/alterations plus custom design. 1016 16th Av South, Nashville, 37212. Please call first. (615) 256-1677.

• Meeting space for groups avail. It's a Scream! has space for support groups, 12-step programs or other groups. (615) 244-7346 for info. Nashville.

• **NEW YORK: EAST VILLAGE** Bed & Breakfast for women. Large bedroom with adjacent private bath. For brochure write B-C Sellen, 252 E. 7th St, NYC 10009 or call (212) 260-1865.

• **HELP WANTED:** Still need writers, photographers statewide. Reply Dare, (615) 327-Dare, (800) 544-Dare.

• **POLITICAL? MOI?** You bet your sweet button! It's a Scream! has the best selection of gay, lesbian & choice buttons, bumperstickers & gifts in Tennessee. It's A Scream! 168 2nd Ave North, Nashville. (615) 244-7346.

• **KNOXVILLE AREA:** Vocalist seeks musicians to form gay rock band. Heavily influenced by The Smiths. Must be open-minded and daring. Call (615) 595-8686.

• **DYKE T-SHIRTS** Show your true colors. Send check or money order for \$15.95 to Dykes Are Us, 151 Tandy Ln, Oak Grove, KY 42262.

• **WANTED:** If you're reliable and conscientious, we're looking for you for commissioned ad sales in Knoxville and Memphis. We're also looking for distribution points and someone to deliver Dare in Jackson, our newest delivery area. Great part-time pay, perfect for students, 2nd job, etc. Dare, Box 40422, Nashville, 37204 or phone (615) 327-Dare.

• **LONG HOURS. HARD WORK. LOW PAY.** Dare is accepting applications from writers in Chattanooga, Clarksville, Jackson, Knoxville, Memphis, Murfreesboro, Nashville, the Tri-cities and around Tennessee. Learn community-oriented journalism, and be one of the best. Dare, Box 40422, Nashville, 37204 or phone (615) 327-Dare.

## + Real Estate

• Ultra contemporary "old house" in historic Lockeland Springs, 1623 Woodland St, 1700 sq ft. Restored Victorian, hardwood floors, 3 working fireplaces, alarm system, steam shower, deck, central h/a, 2BR, spiral staircase, vaulted ceiling, priv. fence, safe, located in "restoration row." Great home for indiv. or couple. Owner terms, \$96K. (615) 255-3133 day, 228-0086 nights.

• **HIST 8-RM STONE** near 5 Pts, Nashville. Excl cond,

owner tms, 10%, no comm, no points. Must see. Write T. Dickens, 4509 Woodside Rd, Old Hickory 37138.

• **PRIME SMALL OFC SPACE** for rent. 120sq ft near Nashville downtown/off West End. Carpet, track lights, utils. inc. \$100/mo. Great for counselor, artist, etc. Pyramid Light & Power, (615) 327-3273.

## + Roommates

• Lkg for professional man to share our home in Belle Meade. You pay \$300/mo + 1/3 utilities. W/D, private bath. Must have references. Nonsmoker preferred. No drugs, please. Phone (615) 269-4171, leave message.

• Share 4 bdrm house with 3. Private entrance, washer/dryer, phone, cable TV. Call (615) 228-6036. Besttime a.m.

• **ROOMMATES HELP** Nashville. (615) 352-7715. Unbelievable prices. Consider combining households before signing lease. Screened for compatibility w/ similar lifestyles.

## + Personals

• **NOTICE:** Dare classifieds are such a big hit, we've decided to extend our **FREE PERSONALS** offer indefinitely. Send a special message. Meet new friends. Or just say your piece to lesbian & gay Tennesseans, & we'll pick up the tab. Send us your personal ad (up to 200 characters) w/ the words "free personals" written across the top of the form below, & your ad is free. Don't just sit there — grab a pen & get personal! Don't forget to add \$5 for response drawers or bold caps. We reserve the right to edit or to refuse any ad. Sorry, phone numbers & street addresses cannot be used in Personals. Offer not good for announcements, sales, roommates, real estate or commercial classified ads.

• **COMQUEST** offers low cost computer matching for gay men. Toll free details: 1-(800) 633-6969 24hrs.

• GWM, 32, 5'10" 160, into working out and fitness, healthy well-built masculine, well-educated. Sks 22-40 for friendship/good times. Photo/letter gets mine. Dare DRAWER 96

• GWM, 22, sks GWM 18-40 not into bar scene and likes romantic evenings, has good sense of humor. Full-length photo would be nice. No druggies. I'm lonely. I'll be waiting 4 you. McMinnville. Dare DRAWER 95

• GWM 41, 6ft, 200 work out regularly, don't smoke or do drugs; grad student in English, finishing degree. Masc, quiet, healthy, not into bars, out looking for serious-minded man for friendship, maybe more. Reply: RHA, Box 4465 B, Nashville 37235.

• GWM, 29, 5'8" 140lbs, br/gr very attractive (Monty Clift type) smart, sincere, honest healthy hi-caliber Vandy guy sks similar 22-32 for 1-on-1. Do you exist? Pls be gay, single, masc smoker in good shape. No photo, no reply. Dare DRAWER 94

• Holly — North to Alaska - Feh!! Go, do, see, experience, work, travel, play - Come home. Say "Hi!" to Mom & Dad & do a humpie for me! I love you, Anne. P.S. Don't forget my t-shirts, prints, puppy...

• SWM, 29 — Female impersonator, attractive, thin, adventurous, I'm looking for friends and one real relationship. I'm submissive, so send me your demands and I'll see how I can serve you. Dare DRAWER 94

• Yo gigolo KY: Just say no!!

• GWM, 43, was gay in 'Nam. Lkng for same to share where we were, where we've been and where we can go. All answered: this is for support group. Dare DRAWER 93

• Lonely GWM, 22, 5'5", 120, dark brown hair, blue eyes, sks GWM 18-40 who enjoys romantic evenings, not into the bar scene & who likes to cuddle, with a good sense of humor. Full length photo pls. No drugs. Dare DRAWER 92

• GWM — very hairy, 37, chubby but handsome sks chaser age 25-45 also GWM for fun, friendship & possible more. I don't drink or drug, own my home & wish to share. Tony, Box 4636 Nashville 37216.

• GWM, 26, 5'8", 155, br/bl, tired of bars. Enjoy a quiet evening at home, movies, theatre. Sks GWM 25-40 who enjoys the same. Prefer well-built masculine man. Photo, phone. Dare DRAWER 91

• GWF, 32, outdoorsy, athletic, artistic, prof., sks similar. Loves lazy days sharing each other. Is there a caring, bright, sensitive woman anywhere? Dare DRAWER 90

• Janice, oh ye matron of Clark Hall: It's a thrill to hear again. Don't forget to call when you're in town.

• GWM, 26, 5'8-1/2", lking for sincere male who loves life, music & fun. Want totally monogamous relationship. If you live in Knoxville & want the same, write me.

Photos appreciated, but not necessary. Phone # must. Dare DRAWER 89

• GWM, 41, 6ft 200, works out regularly, doesn't smoke or do drugs; grad student in English, finishing degree. Masculine, quiet, healthy, not into bars, out, sks serious minded man for friendship, maybe more. RHA, Box 4465 B, Nashville 37235

• Jeff M. of Morristown: Do you remember that wonderful time when we...oh, never mind, that wasn't you. Next time, you can be the man. Craig

• GWM, 35, bl/bl, attr. quiet sks sim who enjoys quiet evening at home, walks in the park, animals, home-cooking & want to share these. Not lking 4 1-night stand or the bars. Positive friendship, poss relationship only. Photo/phone. Dare DRAWER 88

• Lisa baby, you keep me going! Believe me summer is looking wild. I'll meet you here, there & everywhere. — T

• Boy KY: There's no sharing now: you belong in my bed. Will you marry me? Nothing compares 2 u, baby. June 24 is just around the corner, and the 4s and 8s are stacking up. Still missing you & George.

• Denise — Your great grandmother's ring fits me as perfectly as you do. I believe in us. — 314, D

• GWM 6' br/bl 36 ints reading, movies, plays, travel, talk, sks sim friendship or relationship possibilities. All responses will be answered. Dare DRAWER 87

Name .....		OFFICE USE ONLY I..... D..... V..... R..... A..... M.....	
Address .....			
Zip .....			
Phone (Day) ..... (Evening) .....			
I certify that I am the person named above. No ad will be accepted without signature.			
Signed .....			
Run ad for <input type="checkbox"/> 2 weeks <input type="checkbox"/> 4 weeks <input type="checkbox"/> ..... weeks			
Ad cost per 2-week period \$.....			
<input type="checkbox"/> + response drawer charge \$ 5.00			
<input type="checkbox"/> + <b>BOLD CAPS</b> charge \$ 5.00			
= SUBTOTAL \$.....			
x number of two-week periods .....			
= <b>CLASSIFIED AD TOTAL</b> \$.....			
+ <input type="checkbox"/> 3rd-class \$20 subscription \$.....			
+ <input type="checkbox"/> 1st-class \$35 subscription \$.....			
<b>AMOUNT ENCLOSED</b> \$.....			
<p>• All ad prices are for two consecutive weeks: \$10 for up to 100 characters, \$20 for up to 200 characters and so on.</p> <p>• Please print one character per box. A character is any letter, numeral, space or punctuation mark.</p> <p>• We reserve the right to edit ads, and to reject any ad. Sexually explicit or exploitative ads will not be accepted. No ad will be accepted without signature and advance payment in full. We assume no responsibility for advertisers' claims.</p> <p>• Response drawers are available. Responses will be mailed two weeks after the last appearance of the ad. To answer a drawer ad, write to: Dare Drawer # ..... Box 40422 Nashville, TN 37204-0422</p> <p>• Ads received by noon Tuesday will run the following Friday. Please enclose check or money order for total amount, payable to: Dare Box 40422 Nashville, TN 37204-0422</p> <p>• Questions? Phone (615) 327-Dare.</p>			

\$10

\$20



## Buddies 'n' Pals 'n' Partners

A gay dating service

A Hunt/Storck Group Companies, Inc.

Nationwide 1-800-344-PALS

### Who are we?

Formed in 1986, **Buddies 'n' Pals 'n' Partners** is a computer dating service. Our goal is to help you meet someone compatible, both socially and sexually, as a friend or a lover.

### How does your service work?

When your application is received it is entered into our computer system, the computer assigns you a client number. It then compares each of your attributes to those of all the other clients currently in our data base, eliminating those members having too many traits you have classed as undesirable and retaining those that meet your requirements.

The report you receive will contain the following information about your matches: A client identity number, a mini-profile listing all the attributes the client used to describe himself, as well as the authorized contact information provided by the client. Our double screening process ensures that you meet the other clients' requirements.

Your client number is used to allow us to verify your identity when you call our office, *you are the only one who should know this code.*

### How much does it cost?

Our service fee is currently \$35, which includes a one time processing charge and your print-out of the top 15 matches from our current data base. As well, you automatically receive a *six month membership* during which other members may be matched with you; they will receive the authorized contact information you have provided. You can know of these matches *only when they contact you.*

You may also order our **MatchPlus** service for \$55.00. This fee includes 30 client matches and a 6 month membership for **MatchPlus** service customers. You may update your contact information at any time *without charge.*

## Computerized Application Form

Dear Buddy: Please read the instructions carefully so that your match list is not delayed due to errors on your application. Your application must be complete or it will be returned to you for correction. For best results, please indicate at least one of your own traits in each of the main sections of the application form (*i.e.* Age, Build, Race).

### Membership Information

Please provide the following confidential information to help us service your membership. (All correspondence to members is mailed in plain envelopes.)

Name \_\_\_\_\_

Address \_\_\_\_\_

City/State/Zip \_\_\_\_\_

Phone \_\_\_\_\_

Fill out the form completely and mail, along with a check or money order for \$35 payable to **Buddies 'n' Pals 'n' Partners**, P.O. Box 13326, Baltimore, Maryland 21203.

Note: Mailing address required for sending match lists. Please allow one to two weeks for us to process your application.

<b>Geographical Area</b> <input type="checkbox"/> YES <input type="checkbox"/> OK <input type="checkbox"/> NO Minneapolis <input type="checkbox"/> YES <input type="checkbox"/> OK <input type="checkbox"/> NO St. Paul	<b>Type of Relationship</b> <input type="checkbox"/> YES <input type="checkbox"/> OK <input type="checkbox"/> NO Lover (monogamous) <input type="checkbox"/> YES <input type="checkbox"/> OK <input type="checkbox"/> NO Lover (nonmonogamous) <input type="checkbox"/> YES <input type="checkbox"/> OK <input type="checkbox"/> NO Buddy (sexual) <input type="checkbox"/> YES <input type="checkbox"/> OK <input type="checkbox"/> NO Buddy (platonic) <input type="checkbox"/> YES <input type="checkbox"/> OK <input type="checkbox"/> NO One night stand <input type="checkbox"/> YES <input type="checkbox"/> OK <input type="checkbox"/> NO Romantic fling <input type="checkbox"/> YES <input type="checkbox"/> OK <input type="checkbox"/> NO Affair <input type="checkbox"/> YES <input type="checkbox"/> OK <input type="checkbox"/> NO Pen-pal	<b>Age Range</b> <input type="checkbox"/> YES <input type="checkbox"/> OK <input type="checkbox"/> NO 18-21 <input type="checkbox"/> YES <input type="checkbox"/> OK <input type="checkbox"/> NO 21-25 <input type="checkbox"/> YES <input type="checkbox"/> OK <input type="checkbox"/> NO 25-30 <input type="checkbox"/> YES <input type="checkbox"/> OK <input type="checkbox"/> NO 30-35 <input type="checkbox"/> YES <input type="checkbox"/> OK <input type="checkbox"/> NO 35-40 <input type="checkbox"/> YES <input type="checkbox"/> OK <input type="checkbox"/> NO 40-50 <input type="checkbox"/> YES <input type="checkbox"/> OK <input type="checkbox"/> NO 50+	<b>Build</b> <input type="checkbox"/> YES <input type="checkbox"/> OK <input type="checkbox"/> NO Bodybuilder <input type="checkbox"/> YES <input type="checkbox"/> OK <input type="checkbox"/> NO Muscular <input type="checkbox"/> YES <input type="checkbox"/> OK <input type="checkbox"/> NO Average <input type="checkbox"/> YES <input type="checkbox"/> OK <input type="checkbox"/> NO Slim <input type="checkbox"/> YES <input type="checkbox"/> OK <input type="checkbox"/> NO Stocky <input type="checkbox"/> YES <input type="checkbox"/> OK <input type="checkbox"/> NO Heavy <input type="checkbox"/> YES <input type="checkbox"/> OK <input type="checkbox"/> NO Very Heavy	<b>Height</b> <input type="checkbox"/> YES <input type="checkbox"/> OK <input type="checkbox"/> NO 5'4" or less <input type="checkbox"/> YES <input type="checkbox"/> OK <input type="checkbox"/> NO 5'6"-5'9" <input type="checkbox"/> YES <input type="checkbox"/> OK <input type="checkbox"/> NO 5'9"-6' <input type="checkbox"/> YES <input type="checkbox"/> OK <input type="checkbox"/> NO 6'-6'3" <input type="checkbox"/> YES <input type="checkbox"/> OK <input type="checkbox"/> NO 6'3" or taller	<b>Hair</b> <input type="checkbox"/> YES <input type="checkbox"/> OK <input type="checkbox"/> NO Black <input type="checkbox"/> YES <input type="checkbox"/> OK <input type="checkbox"/> NO Dark Brown <input type="checkbox"/> YES <input type="checkbox"/> OK <input type="checkbox"/> NO Light Brown <input type="checkbox"/> YES <input type="checkbox"/> OK <input type="checkbox"/> NO Auburn <input type="checkbox"/> YES <input type="checkbox"/> OK <input type="checkbox"/> NO Red <input type="checkbox"/> YES <input type="checkbox"/> OK <input type="checkbox"/> NO Strawberry Blond <input type="checkbox"/> YES <input type="checkbox"/> OK <input type="checkbox"/> NO Blond <input type="checkbox"/> YES <input type="checkbox"/> OK <input type="checkbox"/> NO White gray <input type="checkbox"/> YES <input type="checkbox"/> OK <input type="checkbox"/> NO Bald	<b>Eyes</b> <input type="checkbox"/> YES <input type="checkbox"/> OK <input type="checkbox"/> NO Blue <input type="checkbox"/> YES <input type="checkbox"/> OK <input type="checkbox"/> NO Green <input type="checkbox"/> YES <input type="checkbox"/> OK <input type="checkbox"/> NO Gray <input type="checkbox"/> YES <input type="checkbox"/> OK <input type="checkbox"/> NO Hazel <input type="checkbox"/> YES <input type="checkbox"/> OK <input type="checkbox"/> NO Brown <input type="checkbox"/> YES <input type="checkbox"/> OK <input type="checkbox"/> NO Black	<b>Facial/Body Hair</b> <input type="checkbox"/> YES <input type="checkbox"/> OK <input type="checkbox"/> NO Smooth <input type="checkbox"/> YES <input type="checkbox"/> OK <input type="checkbox"/> NO Clean Shaven <input type="checkbox"/> YES <input type="checkbox"/> OK <input type="checkbox"/> NO Mustache <input type="checkbox"/> YES <input type="checkbox"/> OK <input type="checkbox"/> NO Beard <input type="checkbox"/> YES <input type="checkbox"/> OK <input type="checkbox"/> NO No body hair <input type="checkbox"/> YES <input type="checkbox"/> OK <input type="checkbox"/> NO Smooth chest <input type="checkbox"/> YES <input type="checkbox"/> OK <input type="checkbox"/> NO Hairy chest <input type="checkbox"/> YES <input type="checkbox"/> OK <input type="checkbox"/> NO Very Hairy	<b>Race</b> <input type="checkbox"/> YES <input type="checkbox"/> OK <input type="checkbox"/> NO Caucasian <input type="checkbox"/> YES <input type="checkbox"/> OK <input type="checkbox"/> NO Asian oriental <input type="checkbox"/> YES <input type="checkbox"/> OK <input type="checkbox"/> NO Black <input type="checkbox"/> YES <input type="checkbox"/> OK <input type="checkbox"/> NO Latin <input type="checkbox"/> YES <input type="checkbox"/> OK <input type="checkbox"/> NO East Indian	<b>General Appearance</b> <input type="checkbox"/> YES <input type="checkbox"/> OK <input type="checkbox"/> NO Very goodlooking <input type="checkbox"/> YES <input type="checkbox"/> OK <input type="checkbox"/> NO Attractive <input type="checkbox"/> YES <input type="checkbox"/> OK <input type="checkbox"/> NO Average <input type="checkbox"/> YES <input type="checkbox"/> OK <input type="checkbox"/> NO Below average <input type="checkbox"/> YES <input type="checkbox"/> OK <input type="checkbox"/> NO Yuppie preppie <input type="checkbox"/> YES <input type="checkbox"/> OK <input type="checkbox"/> NO Young executive <input type="checkbox"/> YES <input type="checkbox"/> OK <input type="checkbox"/> NO Mature executive <input type="checkbox"/> YES <input type="checkbox"/> OK <input type="checkbox"/> NO Trendy <input type="checkbox"/> YES <input type="checkbox"/> OK <input type="checkbox"/> NO Collegiate jock	<b>Dress</b> <input type="checkbox"/> YES <input type="checkbox"/> OK <input type="checkbox"/> NO Casual (t-shirt, jeans) <input type="checkbox"/> YES <input type="checkbox"/> OK <input type="checkbox"/> NO Sometimes sloppy <input type="checkbox"/> YES <input type="checkbox"/> OK <input type="checkbox"/> NO High fashion <input type="checkbox"/> YES <input type="checkbox"/> OK <input type="checkbox"/> NO Semi-formal <input type="checkbox"/> YES <input type="checkbox"/> OK <input type="checkbox"/> NO Drag	<b>Occupation</b> <input type="checkbox"/> YES <input type="checkbox"/> OK <input type="checkbox"/> NO Financially independent <input type="checkbox"/> YES <input type="checkbox"/> OK <input type="checkbox"/> NO Self-supporting <input type="checkbox"/> YES <input type="checkbox"/> OK <input type="checkbox"/> NO Nonself-supporting <input type="checkbox"/> YES <input type="checkbox"/> OK <input type="checkbox"/> NO Unemployed <input type="checkbox"/> YES <input type="checkbox"/> OK <input type="checkbox"/> NO Student <input type="checkbox"/> YES <input type="checkbox"/> OK <input type="checkbox"/> NO Office clerical <input type="checkbox"/> YES <input type="checkbox"/> OK <input type="checkbox"/> NO Service hospitality <input type="checkbox"/> YES <input type="checkbox"/> OK <input type="checkbox"/> NO Sales <input type="checkbox"/> YES <input type="checkbox"/> OK <input type="checkbox"/> NO Construction <input type="checkbox"/> YES <input type="checkbox"/> OK <input type="checkbox"/> NO Technical <input type="checkbox"/> YES <input type="checkbox"/> OK <input type="checkbox"/> NO Self-employed entrepreneur <input type="checkbox"/> YES <input type="checkbox"/> OK <input type="checkbox"/> NO Managerial <input type="checkbox"/> YES <input type="checkbox"/> OK <input type="checkbox"/> NO Professional <input type="checkbox"/> YES <input type="checkbox"/> OK <input type="checkbox"/> NO Health Care <input type="checkbox"/> YES <input type="checkbox"/> OK <input type="checkbox"/> NO Entertainment arts	<b>Substance Use</b> <input type="checkbox"/> YES <input type="checkbox"/> OK <input type="checkbox"/> NO Smoker <input type="checkbox"/> YES <input type="checkbox"/> OK <input type="checkbox"/> NO Non-smoker <input type="checkbox"/> YES <input type="checkbox"/> OK <input type="checkbox"/> NO Heavy drinker <input type="checkbox"/> YES <input type="checkbox"/> OK <input type="checkbox"/> NO Social drinker <input type="checkbox"/> YES <input type="checkbox"/> OK <input type="checkbox"/> NO Non-drinker <input type="checkbox"/> YES <input type="checkbox"/> OK <input type="checkbox"/> NO Non-drug user <input type="checkbox"/> YES <input type="checkbox"/> OK <input type="checkbox"/> NO Light drug user	<b>Personality</b> <input type="checkbox"/> YES <input type="checkbox"/> OK <input type="checkbox"/> NO Assertive <input type="checkbox"/> YES <input type="checkbox"/> OK <input type="checkbox"/> NO Easy-going <input type="checkbox"/> YES <input type="checkbox"/> OK <input type="checkbox"/> NO Outgoing <input type="checkbox"/> YES <input type="checkbox"/> OK <input type="checkbox"/> NO Publicly affectionate <input type="checkbox"/> YES <input type="checkbox"/> OK <input type="checkbox"/> NO Not publicly affectionate <input type="checkbox"/> YES <input type="checkbox"/> OK <input type="checkbox"/> NO Shy reserved <input type="checkbox"/> YES <input type="checkbox"/> OK <input type="checkbox"/> NO Very masculine <input type="checkbox"/> YES <input type="checkbox"/> OK <input type="checkbox"/> NO Fairly masculine <input type="checkbox"/> YES <input type="checkbox"/> OK <input type="checkbox"/> NO Somewhat feminine <input type="checkbox"/> YES <input type="checkbox"/> OK <input type="checkbox"/> NO Very feminine <input type="checkbox"/> YES <input type="checkbox"/> OK <input type="checkbox"/> NO Closeted	<b>Social Activities</b> <input type="checkbox"/> YES <input type="checkbox"/> OK <input type="checkbox"/> NO Spectator sports <input type="checkbox"/> YES <input type="checkbox"/> OK <input type="checkbox"/> NO Working out <input type="checkbox"/> YES <input type="checkbox"/> OK <input type="checkbox"/> NO Movies <input type="checkbox"/> YES <input type="checkbox"/> OK <input type="checkbox"/> NO Live theatre <input type="checkbox"/> YES <input type="checkbox"/> OK <input type="checkbox"/> NO TV video <input type="checkbox"/> YES <input type="checkbox"/> OK <input type="checkbox"/> NO Concerts <input type="checkbox"/> YES <input type="checkbox"/> OK <input type="checkbox"/> NO Arts events <input type="checkbox"/> YES <input type="checkbox"/> OK <input type="checkbox"/> NO Dining out <input type="checkbox"/> YES <input type="checkbox"/> OK <input type="checkbox"/> NO Parties <input type="checkbox"/> YES <input type="checkbox"/> OK <input type="checkbox"/> NO Bars dancing <input type="checkbox"/> YES <input type="checkbox"/> OK <input type="checkbox"/> NO Cooking <input type="checkbox"/> YES <input type="checkbox"/> OK <input type="checkbox"/> NO Travel <input type="checkbox"/> YES <input type="checkbox"/> OK <input type="checkbox"/> NO Camping hiking <input type="checkbox"/> YES <input type="checkbox"/> OK <input type="checkbox"/> NO Sailing surfing <input type="checkbox"/> YES <input type="checkbox"/> OK <input type="checkbox"/> NO Skiing <input type="checkbox"/> YES <input type="checkbox"/> OK <input type="checkbox"/> NO Tennis racquetball <input type="checkbox"/> YES <input type="checkbox"/> OK <input type="checkbox"/> NO Swimming <input type="checkbox"/> YES <input type="checkbox"/> OK <input type="checkbox"/> NO Cycling <input type="checkbox"/> YES <input type="checkbox"/> OK <input type="checkbox"/> NO Music <input type="checkbox"/> YES <input type="checkbox"/> OK <input type="checkbox"/> NO Photographer <input type="checkbox"/> YES <input type="checkbox"/> OK <input type="checkbox"/> NO Painting art	<input type="checkbox"/> YES <input type="checkbox"/> OK <input type="checkbox"/> NO Doorway <input type="checkbox"/> YES <input type="checkbox"/> OK <input type="checkbox"/> NO Openly gay	<input type="checkbox"/> YES <input type="checkbox"/> OK <input type="checkbox"/> NO French passive <input type="checkbox"/> YES <input type="checkbox"/> OK <input type="checkbox"/> NO Greek active <input type="checkbox"/> YES <input type="checkbox"/> OK <input type="checkbox"/> NO Greek passive <input type="checkbox"/> YES <input type="checkbox"/> OK <input type="checkbox"/> NO SAFE SEX <input type="checkbox"/> YES <input type="checkbox"/> OK <input type="checkbox"/> NO Toys <input type="checkbox"/> YES <input type="checkbox"/> OK <input type="checkbox"/> NO Leather <input type="checkbox"/> YES <input type="checkbox"/> OK <input type="checkbox"/> NO S M top <input type="checkbox"/> YES <input type="checkbox"/> OK <input type="checkbox"/> NO S M bottom <input type="checkbox"/> YES <input type="checkbox"/> OK <input type="checkbox"/> NO Heavy S M <input type="checkbox"/> YES <input type="checkbox"/> OK <input type="checkbox"/> NO Experimental <input type="checkbox"/> YES <input type="checkbox"/> OK <input type="checkbox"/> NO Three-ways <input type="checkbox"/> YES <input type="checkbox"/> OK <input type="checkbox"/> NO Group sex <input type="checkbox"/> YES <input type="checkbox"/> OK <input type="checkbox"/> NO Very experienced <input type="checkbox"/> YES <input type="checkbox"/> OK <input type="checkbox"/> NO Average experience <input type="checkbox"/> YES <input type="checkbox"/> OK <input type="checkbox"/> NO Inexperienced <input type="checkbox"/> YES <input type="checkbox"/> OK <input type="checkbox"/> NO Virginal <input type="checkbox"/> YES <input type="checkbox"/> OK <input type="checkbox"/> NO Small to average endowment <input type="checkbox"/> YES <input type="checkbox"/> OK <input type="checkbox"/> NO Average to large <input type="checkbox"/> YES <input type="checkbox"/> OK <input type="checkbox"/> NO Very large endowment <input type="checkbox"/> YES <input type="checkbox"/> OK <input type="checkbox"/> NO Cut <input type="checkbox"/> YES <input type="checkbox"/> OK <input type="checkbox"/> NO Uncut	<b>Special Considerations</b> <input type="checkbox"/> YES <input type="checkbox"/> OK <input type="checkbox"/> NO Sensory speech handicap <input type="checkbox"/> YES <input type="checkbox"/> OK <input type="checkbox"/> NO Movement handicap <input type="checkbox"/> YES <input type="checkbox"/> OK <input type="checkbox"/> NO Have no privacy <input type="checkbox"/> YES <input type="checkbox"/> OK <input type="checkbox"/> NO Have no transportation <input type="checkbox"/> YES <input type="checkbox"/> OK <input type="checkbox"/> NO HIV negative <input type="checkbox"/> YES <input type="checkbox"/> OK <input type="checkbox"/> NO Bisexual <input type="checkbox"/> YES <input type="checkbox"/> OK <input type="checkbox"/> NO Transsexual	<b>Beliefs</b> <input type="checkbox"/> YES <input type="checkbox"/> OK <input type="checkbox"/> NO Catholic <input type="checkbox"/> YES <input type="checkbox"/> OK <input type="checkbox"/> NO Protestant <input type="checkbox"/> YES <input type="checkbox"/> OK <input type="checkbox"/> NO Jewish <input type="checkbox"/> YES <input type="checkbox"/> OK <input type="checkbox"/> NO New age <input type="checkbox"/> YES <input type="checkbox"/> OK <input type="checkbox"/> NO MCC <input type="checkbox"/> YES <input type="checkbox"/> OK <input type="checkbox"/> NO Very religious <input type="checkbox"/> YES <input type="checkbox"/> OK <input type="checkbox"/> NO Somewhat religious <input type="checkbox"/> YES <input type="checkbox"/> OK <input type="checkbox"/> NO Not religious <input type="checkbox"/> YES <input type="checkbox"/> OK <input type="checkbox"/> NO Politically liberal <input type="checkbox"/> YES <input type="checkbox"/> OK <input type="checkbox"/> NO Conservative <input type="checkbox"/> YES <input type="checkbox"/> OK <input type="checkbox"/> NO Social democrat	<b>Sexual Preferences</b> <input type="checkbox"/> YES <input type="checkbox"/> OK <input type="checkbox"/> NO Kissing <input type="checkbox"/> YES <input type="checkbox"/> OK <input type="checkbox"/> NO Cuddling <input type="checkbox"/> YES <input type="checkbox"/> OK <input type="checkbox"/> NO J O <input type="checkbox"/> YES <input type="checkbox"/> OK <input type="checkbox"/> NO French active
-------------------------------------------------------------------------------------------------------------------------------------------------------------------------------------------------------------------------------	------------------------------------------------------------------------------------------------------------------------------------------------------------------------------------------------------------------------------------------------------------------------------------------------------------------------------------------------------------------------------------------------------------------------------------------------------------------------------------------------------------------------------------------------------------------------------------------------------------------------------------------------------------------------------------------------------------------------------------------------------------------------------------------------------------------------------------------------------------------------------------	--------------------------------------------------------------------------------------------------------------------------------------------------------------------------------------------------------------------------------------------------------------------------------------------------------------------------------------------------------------------------------------------------------------------------------------------------------------------------------------------------------------------------------------------------------------------------------------------------------------------------------------------------------------------------------------------------	----------------------------------------------------------------------------------------------------------------------------------------------------------------------------------------------------------------------------------------------------------------------------------------------------------------------------------------------------------------------------------------------------------------------------------------------------------------------------------------------------------------------------------------------------------------------------------------------------------------------------------------------------------------------------------------------------------------	-----------------------------------------------------------------------------------------------------------------------------------------------------------------------------------------------------------------------------------------------------------------------------------------------------------------------------------------------------------------------------------------------------------------------------------------------------------------------------------------------------------------------------	--------------------------------------------------------------------------------------------------------------------------------------------------------------------------------------------------------------------------------------------------------------------------------------------------------------------------------------------------------------------------------------------------------------------------------------------------------------------------------------------------------------------------------------------------------------------------------------------------------------------------------------------------------------------------------------------------------------------------------------------------------------------------------------------------------------------------------------------------------------------------------------------------------------------	-----------------------------------------------------------------------------------------------------------------------------------------------------------------------------------------------------------------------------------------------------------------------------------------------------------------------------------------------------------------------------------------------------------------------------------------------------------------------------------------------------------------------------------------------------------------------------------------------	---------------------------------------------------------------------------------------------------------------------------------------------------------------------------------------------------------------------------------------------------------------------------------------------------------------------------------------------------------------------------------------------------------------------------------------------------------------------------------------------------------------------------------------------------------------------------------------------------------------------------------------------------------------------------------------------------------------------------------------------------------------------------------------------------------------------------------------------	----------------------------------------------------------------------------------------------------------------------------------------------------------------------------------------------------------------------------------------------------------------------------------------------------------------------------------------------------------------------------------------------------------------------------------------------------------------------------------------------------------------------	----------------------------------------------------------------------------------------------------------------------------------------------------------------------------------------------------------------------------------------------------------------------------------------------------------------------------------------------------------------------------------------------------------------------------------------------------------------------------------------------------------------------------------------------------------------------------------------------------------------------------------------------------------------------------------------------------------------------------------------------------------------------------------------------------------------------------------------------------------------------------------------------------------------------------------------------------------------------------	---------------------------------------------------------------------------------------------------------------------------------------------------------------------------------------------------------------------------------------------------------------------------------------------------------------------------------------------------------------------------------------------------------------------------------------------------------------------------------------------------------------------------------------------	----------------------------------------------------------------------------------------------------------------------------------------------------------------------------------------------------------------------------------------------------------------------------------------------------------------------------------------------------------------------------------------------------------------------------------------------------------------------------------------------------------------------------------------------------------------------------------------------------------------------------------------------------------------------------------------------------------------------------------------------------------------------------------------------------------------------------------------------------------------------------------------------------------------------------------------------------------------------------------------------------------------------------------------------------------------------------------------------------------------------------------------------------------------------------------------------------------------------------------------------------------------------------------------------------------------------------------------------------------------------------------------------------------------------------------------------------------------------------------------------------------------------------------------------------------------------------------------------------------------------------	-------------------------------------------------------------------------------------------------------------------------------------------------------------------------------------------------------------------------------------------------------------------------------------------------------------------------------------------------------------------------------------------------------------------------------------------------------------------------------------------------------------------------------------------------------------------------------------------------------------------------------------------------------------------------------------------------------------------------------------------------------	------------------------------------------------------------------------------------------------------------------------------------------------------------------------------------------------------------------------------------------------------------------------------------------------------------------------------------------------------------------------------------------------------------------------------------------------------------------------------------------------------------------------------------------------------------------------------------------------------------------------------------------------------------------------------------------------------------------------------------------------------------------------------------------------------------------------------------------------------------------------------------------------------------------------------------------------------------------------------------------------------------------------------------------------------------------------------------------------------------------------------------------------------------------------------------------------	------------------------------------------------------------------------------------------------------------------------------------------------------------------------------------------------------------------------------------------------------------------------------------------------------------------------------------------------------------------------------------------------------------------------------------------------------------------------------------------------------------------------------------------------------------------------------------------------------------------------------------------------------------------------------------------------------------------------------------------------------------------------------------------------------------------------------------------------------------------------------------------------------------------------------------------------------------------------------------------------------------------------------------------------------------------------------------------------------------------------------------------------------------------------------------------------------------------------------------------------------------------------------------------------------------------------------------------------------------------------------------------------------------------------------------------------------------------------------------------------------------------------------------------------------------------------------------------------------------------------------------------------------------------------------------------------------------------------------------------------------------------------------------------------------------------------------------------------------------------------------------------------------------------------------------------------------------------------------------------------------------------------------------------------------------------------------------------------------------------------------------------------------------------------------------------	-------------------------------------------------------------------------------------------------------------------------------------------------------------------------------------------------	-------------------------------------------------------------------------------------------------------------------------------------------------------------------------------------------------------------------------------------------------------------------------------------------------------------------------------------------------------------------------------------------------------------------------------------------------------------------------------------------------------------------------------------------------------------------------------------------------------------------------------------------------------------------------------------------------------------------------------------------------------------------------------------------------------------------------------------------------------------------------------------------------------------------------------------------------------------------------------------------------------------------------------------------------------------------------------------------------------------------------------------------------------------------------------------------------------------------------------------------------------------------------------------------------------------------------------------------------------------------------------------------------------------------------------------------------------------------------------------------------------------------------------------------------------------------------------------------------------------------------------------------------------------------------------------------------------------------------------------------------------------------------------------------------------------------------------------------------------------------------------------------------------------------------------------------------------------------------------------------------------------------------------------------------------------------------------------------------------------------------------------------------------------------------------------------	------------------------------------------------------------------------------------------------------------------------------------------------------------------------------------------------------------------------------------------------------------------------------------------------------------------------------------------------------------------------------------------------------------------------------------------------------------------------------------------------------------------------------------------------------------------------------------------------------------------------------------------------------------------------------------------------------------------------------------------------------------------------------------------	----------------------------------------------------------------------------------------------------------------------------------------------------------------------------------------------------------------------------------------------------------------------------------------------------------------------------------------------------------------------------------------------------------------------------------------------------------------------------------------------------------------------------------------------------------------------------------------------------------------------------------------------------------------------------------------------------------------------------------------------------------------------------------------------------------------------------------------------------------------------------------------------------------------------------------------------------------------------------------------------------------------------------------------------------------------------------------------------------------------------------------------------------------------	------------------------------------------------------------------------------------------------------------------------------------------------------------------------------------------------------------------------------------------------------------------------------------------------------------------------------------------------------------------------------------------------------------------------------

### What else do I need to know?

Members agree that the information they provide is complete and accurate. As well, that any information they receive from us is confidential, *for their personal use only*, in accordance with the objectives of the service.

We reserve the right to decline applications for any reason, if an application is declined a full refund will be issued. We also reserve the right to terminate any membership without refund if the information provided is found to be deliberately incomplete, untrue or deceptive.

### How do I fill out the Application Form?

*We know you hate reading instructions, but in order for us to provide you with the best possible service, please read these instructions carefully before filling out your Buddies 'n' Pals 'n' Partners Application Form.*

At first 191 questions may seem a bit overwhelming, but, in fact, filling out the Application Form is really not that difficult if you follow these four steps:

**STEP 1:** Fill in the section entitled **Membership Information** (For office use only). Enter your name, full mailing address, zip code, phone number. (*We will contact you by phone only if you include a phone number here.*) A mailing address is required for sending match lists.

**STEP 2:** Complete the **Contact Information** section and sign the disclaimer. The contact information you provide here will be given to members who match with you. The contact information should include your first name and phone number or a contact address. Use this section to tell members something about yourself, information that would not normally be included in the mini-profile. The use of this section is entirely up to you. However, giving out work phone numbers or home address is strongly discouraged!

**STEP 3:** The Boxes on the left hand side of each column are *used when the indicated attribute applies to you.* Check at least one box per section, only one box in sections which are mutually exclusive (*i.e.* Age, Height, Hair, Location).

**STEP 4:** The words YES, OK and NO to the left of the attribute name describe the type of person you would like to meet. Circle YES when the attribute is *strongly desired* in a match. Indicating a YES will never disqualify a potential match. Circle OK if it doesn't matter one way or the other. Circle NO if you would *not like* this attribute in a match. A NO acts as a vote against the person, it does not automatically disqualify them.

### Contact Information

☐ Option 1: Contact information written below will be given out to members matching up with your profile. Contact information should include your first name and a phone number or some contact address. Work numbers and home address are discouraged!

(please print) \_\_\_\_\_

\_\_\_\_\_

\_\_\_\_\_

\_\_\_\_\_

### Disclaimer

By signing I agree that neither the computer dating service nor its agents has any liability and cannot be held responsible for any actions of its members as a result of the release of the authorized contact information indicated above. I also state that I am of legal age.

Signature \_\_\_\_\_

Date \_\_\_\_\_







## The Chute

Restaurant & Lounge

*In the tradition of yesteryear, with the freshness of today*

### SHAKE A LEG!

Check out our free Western Dance lessons, Tuesdays and Thursdays, 7:00 p.m. — 9:00 p.m. Jim welcomes everyone (beginners too!) and reviews previous lessons every week to help everyone brush up. Then come show off a little Friday and Saturday nights as we throw open the Trophy Room for Western Dancing.

### LIGHTS ON YOUR FEET.

We spin the hottest for video / disco dancing every night!

As always, be sure to support Music City Sports Association softball. Go, Numbers!

## SUNDAY, SUNDAY!

Join us this Sunday, May 20,  
for a full evening of fun and friends:

Nashville Numbers Beer Bust beginning at 5:00 p.m.

Country Western Hoedown beginning at 5:00 p.m.

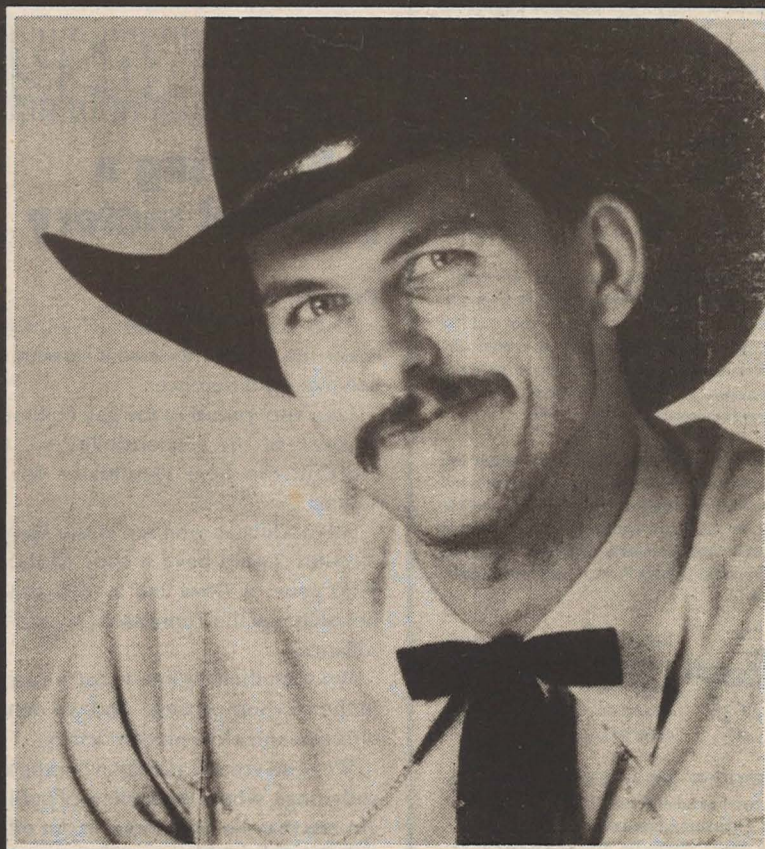
and our very special guest

## JEFF MILLER

West Coast recording artist  
and rodeo star Jeff Miller will  
perform two live shows,  
9:00 p.m. and 11:00 p.m.

Sunday Night Dinner Special, Sunday, May 20  
Barbecued chicken, macaroni salad,  
baked beans, sliced peaches & hot homemade rolls, only \$3.<sup>95</sup>

Join us in the dining room  
5:00 – 10:00 p.m., Tuesday – Sunday.



The Chute 2535 Franklin Road, Nashville (615) 297-4571



Dare

TENNESSEE'S LESBIAN &amp; GAY NEWSWEEKLY

"I am the Love that dare not speak its name."  
— Lord Alfred Douglas, "The Two Loves," 1892

Editor JEFFREY ELLIS  
Book Editor SIERRE DRYDEN  
Staff Writers CURTIS BALLS

MARK LAWRENCE  
FLYNNE MALONE  
JOE MAROIL  
VICTORIA MIKLOSKY  
JACKI MOSS  
LISA PARIAM  
MICHAEL SANDERS  
LAURA TEK  
BEN YISSAK

Editorial Assistant KAREN MATHIS  
Staff Cartoonist LESLIE GUERIN-HAINES  
Contributors SUSAN BRUNINGA  
CARLTON CORNETT  
NANCY LYN DEFINE  
CHRIS FREEMAN  
GEORGE GRAHAM  
DAVID MCCOLLOUGH  
ANDREA NATALIE  
JIM ROCHE  
RYAN SHELLEY

Publisher R. STUART BIVIN, III, ESQ.  
Advertising Sales ANGELA BRYANT  
Dare logo design RUSEL BROWN



Published weekly by  
Pyramid Light & Power  
Box 40422, Nashville, TN  
37204-0422  
Phone (615) 327-Dare  
or toll-free (800) 544-Dare

ADVERTISING Phone for rates and information.

ARCHIVES Dare is available on microfilm at the  
Tennessee State Library and Archives.

LETTERS We welcome your letters. Submissions over 500 words will be considered for publication in the Soapbox space. Letters must be signed and include the writer's address and phone for verification. Names will be withheld on request. We reserve the right to edit for length and clarity. No defamatory material will be published.

All letters become the sole property of Pyramid Light & Power and will be assumed intended for publication unless otherwise explicitly stated.

NOTICE Publication of the name, photograph or other likeness of any person or organization in Dare is not to be construed as any indication of the sexual, religious or political orientation, practice or beliefs of such person or members of such organization.

Dare and the Dare logo are trademarks of Pyramid Light & Power for its newspaper. Entire contents and design copyright ©1990 Pyramid Light & Power, except where specifically noted. All rights reserved. Reproduction, either in whole or in part, is strictly prohibited without the express written consent of the publisher.

OPINIONS The opinions of this newspaper are expressed only in editorials. Any views expressed in any advertisement, signed column, letter, article or cartoon are those of the author, artist, speaker or writer, and do not necessarily reflect the positions of Dare, Pyramid Light & Power, staff members or advertisers.



RECYCLE Every Dare is printed on newsprint made from 100% recycled paper. Please do your part by recycling your copy of Dare.

SUBSCRIPTIONS \$35 first class, \$20 third class.  
Postal Service: send address changes to:  
Circulation Department, Dare  
Box 40422, Nashville, TN 37204-0422

Soapbox

## + Some thoughts on the hate crimes victory

by TIM MCFEELEY

Executive Director

Human Rights Campaign Fund

On Monday, April 23, I attended the White House signing ceremony of the Hate Crimes Statistics Act.

The Act is the first piece of federal legislation that includes the words "sexual orientation," and the ceremony was the first of its kind to include representatives of the lesbian and gay community.

The Act, which requires the Attorney General and federal law enforcement agents to collect data on the incidents of crimes motivated by racial, religious, ethnic, or homophobic bigotry, passed the House and Senate earlier this year, and during the Senate debate, a homophobic, hateful, and irrelevant amendment, offered by Senator Jesse Helms (R.-N.C.), was soundly defeated, 77 to 19.

As I sat waiting for the President's 3 p.m. entrance in an ornate auditorium filled with representatives of religious, ethnic, and racial minorities and the Congressional sponsors of the statute, I reflected on the decades of accumulated pain, humiliation, physical beatings, church and synagogue desecrations and intimidations that have been sustained in America by people of color, immigrants, Jews, and many others.

I thought about Roger Macomber, a 27 year old man from Burlington, Vermont, who clings to life on a respirator, blinded and beaten severely on April 16 this year, and of the words of Senator Orrin Hatch (R.-Utah) during the February 8 debate on the Senate floor:

"But I know one thing that they [gay and lesbian Americans] do think and they are right

on it, that they should not be brutalized and beaten and murdered because of hatred or for any other reason, but certainly not because of their sexual orientation.

"They are human beings too, and they ought to be treated like human beings. There is a right every American ought to have and that is the right to be free and unmolested from vicious hate criminal activity."

I thought about the pain of a 70 year old friend of mine who still remembers, sixty years later, the harassments and beatings he took as a child because he was a "sissy."

And I called back the words of Elie Wiesel, the Holocaust survivor and scholar, at the New York HRCF Dinner last November:

"What I have learned, therefore, is that the worst sin is to inflict shame and humiliation on anyone else for whatever reason..."

"I have seen in my lifetime the consequences of the opposing views when they have dominated the scene. I have seen Jews and so many others, including gays, in those places of darkness, silence, and fire."

Some will say that the Hate Crimes Statistics Act does very little for lesbians and gays, and if stripped of its symbolism the Act simple — no protections against discrimination are included.

The Act is simple but significant, because for the first time in history, the national

government, and the American people through its Congress and President, have said in this Act that homophobia is wrong and that we need to fight it and eradicate it from America.

It is indeed terribly important to remember that henceforth, gay and lesbian Americans can quote to the world the President's words on April 23, 1990:

"We must work together to build an America of opportunity where every American is free, finally, from discrimination, and I will use this noble office, this 'bully pulpit' if you will, to speak out against hate and discrimination everywhere it exists."

It is important for every lesbian and gay American to remember and treasure the insults and beatings, as these are the broken bones that mend stronger and make us wiser and more sensitive to the sufferings of others.

But we also need to celebrate the small steps that take us closer to liberty and the pursuit of happiness.

History will judge whether April 23 stands as a date of significance in the lesbian and gay movement, but it will always be a personal highlight for me.

I'm sorry that you all were not there with us, but I wanted to let you know that the pain all of you have experienced was present in that Presidential office with each of us. ✦

BOX 40422

## + Savoring a political victory

Dear Dare:

"T-GALA goes 9 for 11" — that article made me happy, because it showed that we can make a difference.

I am very proud of the gay community — because of the responsibility we took in electing the best candidates for public service.

All candidates who ran in the May 1, 1990 election should have a copy of the May 4, 1990 issue of Dare and a copy of the May newsletter of the Tennessee Gay and Lesbian Alliance.

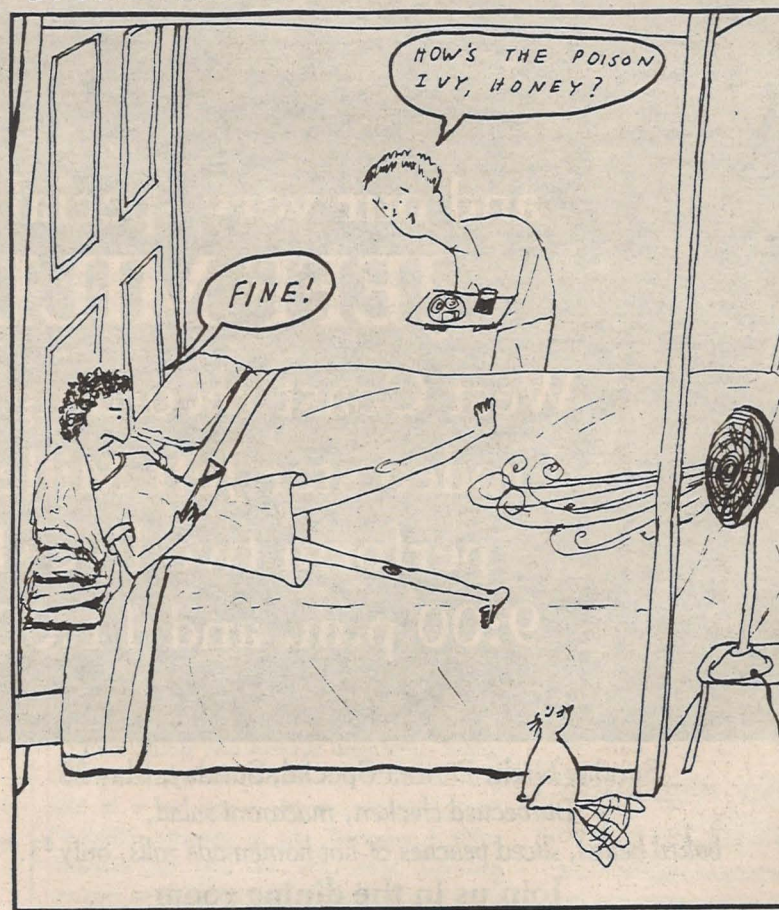
We want them to know that we are a force in the election process. And we demand an effective and efficient democracy.

We need voter registration booths at all gay gatherings, where the seekers of public office can see that we are serious in our efforts.

HELEN WOODS

Nashville

## STONEWALL RIOTS



LIKE MANY WOODSWOMEN BEFORE HER, ANGELA HAD USED LEAVES IN LIEU OF TOILET PAPER.

— CARTOON BY ANDREA NATALIE



# Loose Lips

## + The 'Diceman' cometh

"Clay, Clay go away."

— *Chant from two hecklers in NBC's Studio 8H last weekend, protesting the appearance of so-called comedian Andrew Dice Clay on SATURDAY NIGHT LIVE.*

"That's the type guy that hangs out in the men's room to smell other people's shit all day long."

— *Clay's reaction to the hecklers.*

"NBC, aware of his tendency to call women 'bitches', verbally assail gays and even use naughty words, aired Saturday's show on a five-second delay basis so it could bleep out anything obscene or worse."

— *Associated Press television writer Jay Sharbutt.*

"I mean, what do I need — more P.R.? I couldn't get any more P.R. if I took out my penis and wrapped it around the microphone stand."

— *The ever-articulate Clay commenting on the brouhaha caused by his appearance on SATURDAY NIGHT LIVE and the subsequent boycotts by series regular Nora Dunn and scheduled musical guest Sinéad O'Connor.*

"Before I came out to L.A., I didn't really know from gay people. And the first time I walked outta my house, I saw two guys kissin' in the street. To me this looked strange. And to me, as a comedian, it's a joke. And with my persona onstage, this would be something he would talk about. But I didn't get vicious with it. I don't really get too vicious with anything. I'm just filthy. And the filthier I am, the funnier it is. And anyway, I don't do the gay stuff anymore. I'm bored with it. I did it. I'm doing the handicapped now. It's like you go to the mall and every parkin' space says, HANDICAPPED. How many fuckin' handicapped are drivin' around the mall? And another thing, why don't they have parkin' spaces for midgets?"

— *Andrew Dice Clay to interviewer Bob Colacello in June's VANITY FAIR.*

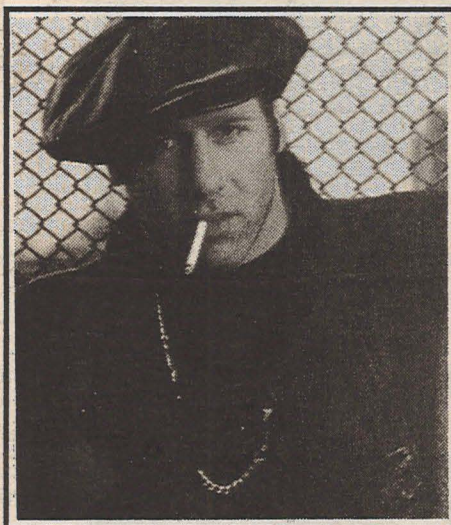
"Except in drag clubs, she inspired no real imitators. But Garbo was more than a camp goddess. She was just the most haunting beauty, and the finest actress, in movie history."

— *Movie critic Richard Corliss remembering Greta Garbo, "The Last Mysterious Lady," in TIME magazine's April 30 issue.*

"I'm a clotheshorse. And everything fits. We did a photo session a few weeks ago, and we put on a lot of the old clothes for laughs — everything fit! It was really weird"

— *Pop music chameleon David Bowie. What is he this week? Bisexual? Heterosexual? Homosexual? Only his codpiece knows for sure.*

"America is ... involved in a kulturkampf... a war between cultures and a war about the meaning of 'culture.' By 'culture war,' I don't mean arguments over the relative merits of Mozart and Beethoven, HENRY V on stage and



**Andrew Dice Clay.** Masking bigotry, prejudices and hatred with a comedy act that stirs controversy wherever he goes. — DARE FILE PHOTO

HENRY V on screen, Elliot and Auden, Tom Wolfe and E.L. Doctorow...I mean the struggle between those who believe that the norms of 'bourgeois morality' (which is drawn in the main from classic Jewish and Christian morality) should form the ethical basis of our common life and those who are determined these norms will be replaced with a radical and thorough-going moral relativism...That is the division in our house."

— *Rep. Henry Hyde, writing in a recent issue of the NATIONAL REVIEW.*

"Cincinnati's reaction was predictable. It enjoys a reputation as a city of excruciating rectitude, one that tolerates no strip joints and bars video rental shops from trafficking in X-rated films. It is a city that banned the sale of Larry Flynt's seedy, soft-porn magazine HUSTLER. It could hardly be expected to celebrate the arrival of the Mapplethorpe show and it didn't..."

"Opponents of the exhibit saw Cincinnati on the verge of becoming one with Sodom and Gomorrah. To supporters of the show the jury's and the sheriff's action signalled a rebirth of Naziism."

— *Syndicated columnist Dave Rossie, writing about the Robert Mapplethorpe photo exhibit at the Cincinnati Museum of Art and the ensuing controversy.*

"From the moment they walk on campus as freshmen, we make them very aware of racial and sexual insensitivities and what's acceptable behavior. This is not just a moral argument but an educational argument. You go to college not only for the latest knowledge but also to meet people from different backgrounds. That's the genius of the American higher education system compared with the Europeans'. We don't simply skim the elite."

— *Donna Shalala, the first woman to head a Big Ten university, in an interview with TIME magazine about her work at the University of Wisconsin.*

© 1990 Dare Features Syndicate

## Your guide to the gay '90s.

Does this thing come with a manual?



We'll be here to keep you up to date on what's happening in the lesbian and gay community into the '90s.

We're *Dare*, Tennessee's first and only truly statewide lesbian and gay organization.

Each week, we bring you reliable news, informed opinion, literate reviews and fascinating features — everything you need to know about lesbian and gay life in Tennessee, in one festive package.

That festive package also makes a great gift that keeps on giving for a full year. If you like, we'll even send a gift card in your name.

And now, you have a choice: a more affordable third-class subscription rate, and a first-class subscription for those who just can't wait.

- 1 year of *Dare* mailed 1st class, \$35
- 1 year of *Dare* mailed 3rd class, \$20

Please allow 5 – 10 days for delivery of 3rd-class mail.

**Dare**

Tennessee's Lesbian and Gay Newsweekly

Please send a ☐ \$35 1st-class ☐ \$20 3rd-class gift subscription to:

Name .....

Address .....

City ..... State ..... Zip .....

☐ Please send me a ☐ \$35 1st-class ☐ \$20 3rd-class subscription:

My Name .....

Address .....

City ..... State ..... Zip .....

Phone (Day) .....

(Evening) .....

Signature .....

\$35 for each subscription  
mailed 1st class \$.....  
\$20 for each subscription  
mailed 3rd class \$.....  
☐ Please enclose a gift card.  
TOTAL \$.....

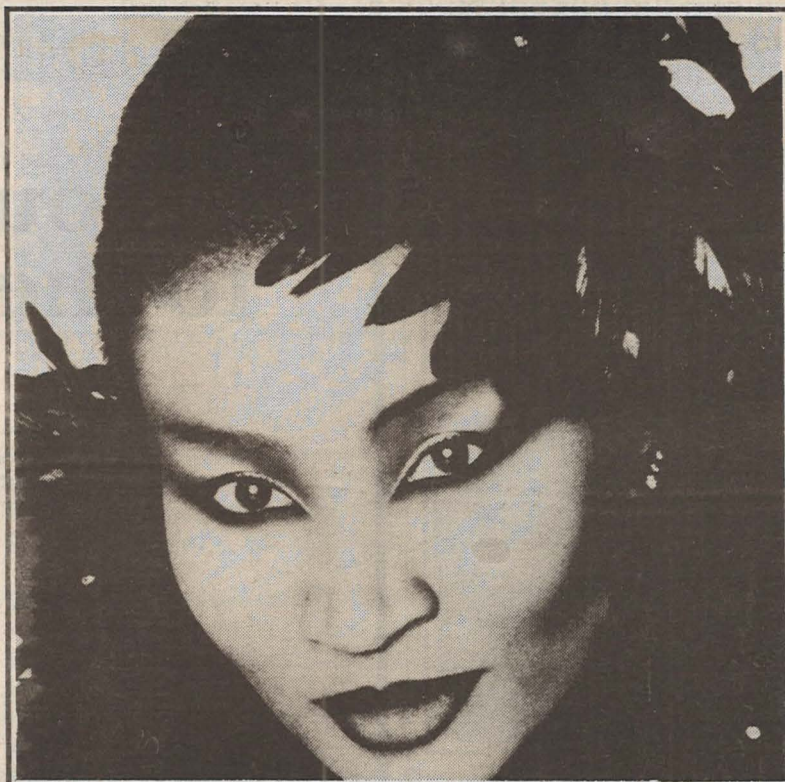
• No order or gift order can be accepted without YOUR phone number and signature for verification.  
• *Dare* is mailed in an envelope. Our mailing list is confidential.  
• Please send check or money order to: *Dare*, Box 40422, Nashville, TN 37204-0422

**Dare**

Offer good only in the United States and if postmarked on or before May 30, 1990.



open every night at 7  
2-for-1 happy hour 7 - 10  
weeknights no cover til 9



open every night at 7  
2-for-1 happy hour 7 - 10  
weeknights no cover til 9

**mondays** amateur night - \$25 to the winner! 50¢ draft  
**tuesdays** cast shows 11 & 12:30  
**wednesdays** mid-week dance break no cover \$3 beer bust 7 - 1  
**thursdays** cast shows with our male dancers 11 & 12:30  
**fridays and saturdays** dance night  
**sundays** special shows call bar for details

**this friday, may 18 victory party 7:30 - 9:30**

**this sunday, may 20 drag queen mud wrestling!**

**friday, june 1 viola wills live in concert \$6 cover**



■ **WAREHOUSE TWO**  
the tradition continues  
■ **nashville's premier gay dance bar**  
at 2529 franklin road ■ phone (615) 385-9689

open every night at 7  
2-for-1 happy hour 7 - 10  
weeknights no cover til 9

open every night at 7  
2-for-1 happy hour 7 - 10  
weeknights no cover til 9